



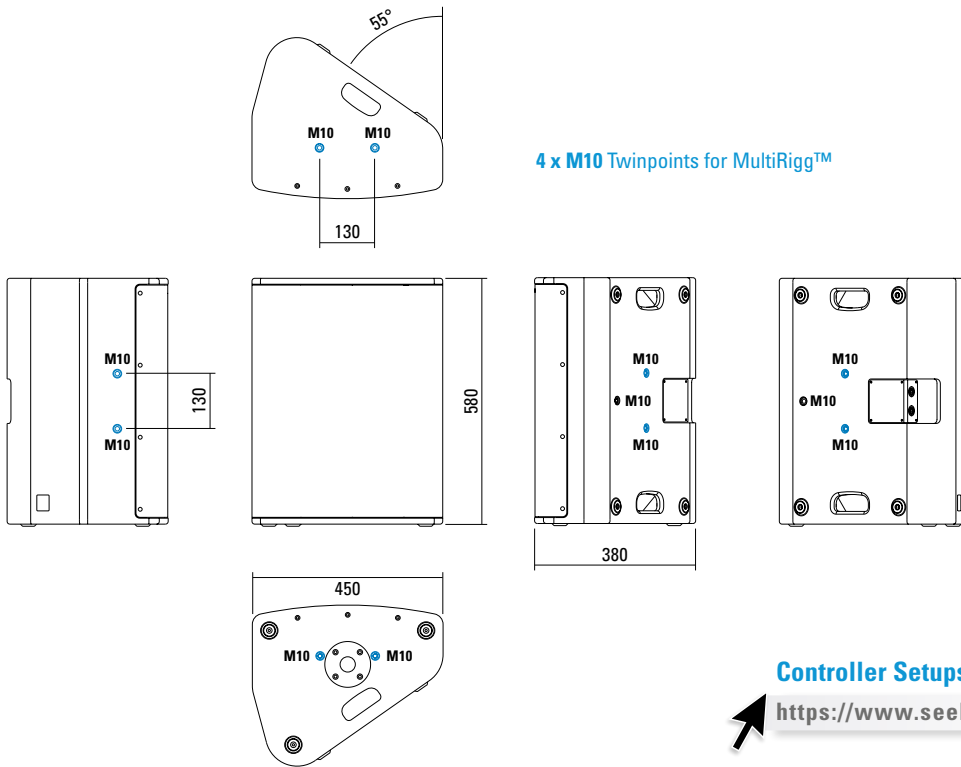
Multifunctional premium-class compact 2-way system. The coaxial configuration in combination with a carefully designed large-area horn ensures absolutely constant response even off the main axis. High-power Neodym drivers and long-excursion coils provide high efficiency and reduced distortion. Nine M10 threaded mounting points are available to mount MultiRigg hardware and other accessories for installation or mobile applications.

PRODUCT SPECIFICATIONS

Speaker Components	15" Nd (3,5" VC) 1,4" Nd Compression Driver (3" VC)
Description	Multifunctional Coaxial Sound System
Power AES / Peak	600 W / 1800 W
Impedance nominal	8 Ω
SPL 1 W / Peak @ 1 m	101 dB / 134 dB
Usable Range	50 Hz - 18 kHz (-6dB)
Tuning Frequency excursion minimum	60 Hz
X - Overpoint acoustical	1 kHz
Coverage horizontal / vertical	80° x 60° - rotatable
Connectors	2 x Speakon NL4MP in/out Coding: 1 +/- HiMid, 2 +/- loop thru
Handles	2 x
Rigging / Fittings	9 x M10 To be used with MultiRigg 35 mm pole mount
Weight	22,5 kg
Size height x width x depth	58,0 x 45,0 x 38,0 cm
Order No.	01097

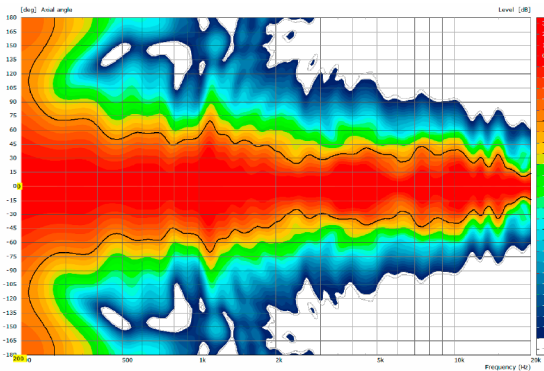


DIMENSIONS

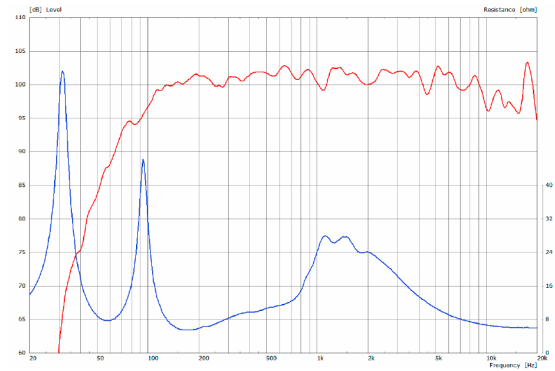


MEASUREMENTS

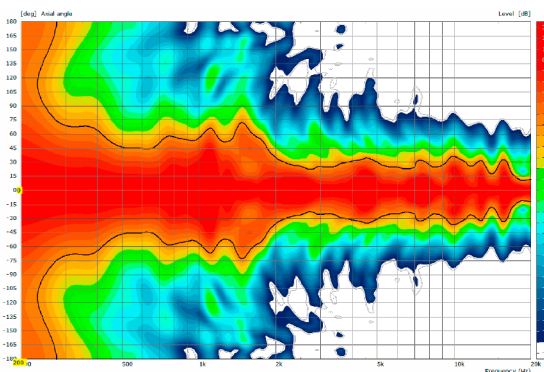
2D Directivity Plot - horizontal



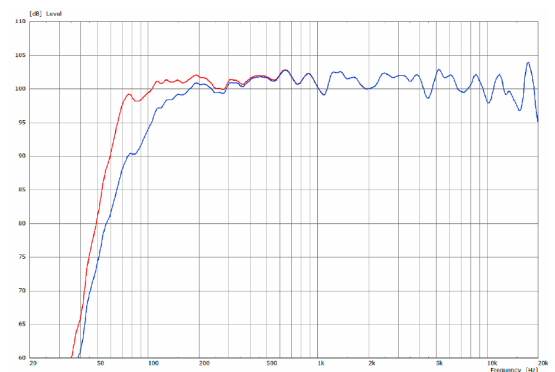
Sensitivity 1 W @ 1 m + Impedance



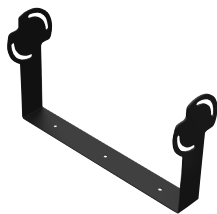
2D Directivity Plot - vertical



Frequency Response with Presets



Flying-Bracket



for X 8,
horizontal alignment,
incl. (4 x M10 x 20 socket head
screws, 4 x M10 washers,
4 x rubber washers)
Order No. **01201/X8/set**

MultiRigg™



swiveling fastening solution
for horizontal and vertical alignment,
for flown / ground stacked / mounted
applications, incl. accessories
(2 x knurled screws M10 x 20 mm,
1 x handle screw M8 x 55 mm),
max. load 50 kg
Order No. **01360**

MultiRigg™ light



version for fixed installations,
for horizontal and vertical alignment,
tiltable vertical angle,
incl. accessories (2 x M10 x 20 socket
head screws), max. load 50 kg
Order No. **01362**

MultiTilt™



Tilt adapter with adjustable tilt from
0° to 37,5° (2,5° steps), integr. pole
mount adapter with clamping device,
2 x knurled screws (M10 x 20 mm),
max. load 50 kg
Order No. **01370**

Knurled Screw



M10 x 20 mm
Order No. **73750/w** (RAL 9010)
Order No. **73750**

Knurled Head Nut



reduction screw for fastening
M10 Pole Mount Adapter (08126)
Order No. **73755**

Pole Mount Adapter



35 mm ø → M10 x 16 mm,
M8 x 20 star knob screw
Order No. **08126**
35 mm ø → M10 x 16 mm
Order No. **08126/II**

Steel Safety



6 mm x 600 mm, black,
max. load 22 kg (BGI 810-3),
quick connector undetachably
Order No. **01376/6**

TV Spigot



10 mm internal thread,
28 mm Ø
Order No. **08128**

Ring Screw



M10– DIN 580
Order No. **73700** (zincd)
Order No. **73700/sw** (black zincd)

Quick Trigger Clamp



max. load 100 kg
Order No. **01223/100 kg**

Quick Trigger Clamp - small



M10, max. load 20 kg
Order No. **01223/20 kg**



MultiRigg™ Light



MultiRigg™

ACCESSORIES X 8

Adapter



for X 4, X 6, X 8
for mounting with Wall Mount (03034),
incl. 2 x M10 x 20 socket head screws

Order No. **01198/w** (RAL 9010)
Order No. **01198**

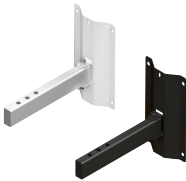
Wall Mount



2 x M6 fixing holes (d=73 mm),
1 x M10 fixing hole (center),
max. load 25 kg

Order No. **03034/w** (RAL 9010)
Order No. **03034**

Wall Mount



bar: 269 mm, max. load 40 kg,
incl. (M10 x 70 mm socket head screw,
M10 hex lock nut and flat washer)

Order No. **08130/F/269/w** (RAL 9010)
Order No. **08130/F/269**

Wall Mount



with tilt unit, max. load 40 kg
Order No. **08130**

Hybrid Cable System



PowerCon-PowerCon / XLR-XLR

2,5 m Order No. **08462**
5 m Order No. **08464**
10 m Order No. **08466**
15 m Order No. **08468**

Cover



for X 8,
padded
Order No. **01225/X8**

Rain Cover



for X 8,
with zipper
Order No. **01225/X8/outdoor**

Flight Case



for 2 pcs. X 8 and 2 pcs. MultiRigg,
partition walls, heavy duty, 9 mm
birch multiplex, PVC coated black,
6 x recessed sprung handles,
2 x butterfly catches, 4 x 100 mm blue
wheels (2 pcs. with brake), interior
lined with felt
Size (H x W x D): 76,2 x 61,5 x 74,7 cm
Order No. **16570**



Rain Cover