



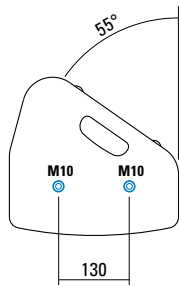
**Multifunctional premium-class compact 2-way system. The coaxial configuration in combination with a carefully designed large-area horn ensures absolutely constant response even off the main axis. High-power Neodym drivers and long-excursion coils provide high efficiency and reduced distortion. Nine M10 threaded mounting points are available to mount MultiRigg hardware and other accessories for installation or mobile applications.**

## PRODUCT SPECIFICATIONS

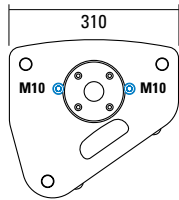
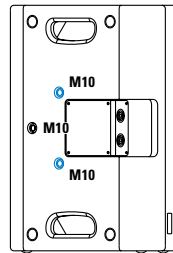
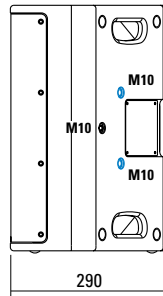
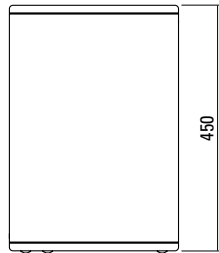
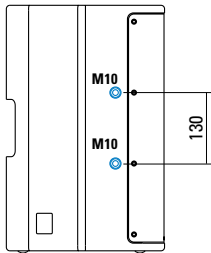
<b>Speaker Components</b>	10" Nd (3" VC) / 1" Nd (1,7" VC)
<b>Description</b>	Multifunctional Coaxial Sound System
<b>Power</b> AES / Peak	350 W / 1000 W
<b>Impedance</b> nominal	8 Ω
<b>SPL</b> 1 W / Peak @ 1 m	97 dB / 127 dB
<b>Usable Range</b>	60 Hz - 19 kHz (-6 dB)
<b>Tuning Frequency</b> Excursion minimum	70 Hz
<b>X - Overpoint</b> acoustical	1,2 kHz
<b>Coverage</b> horizontal / vertical	80° x 60° - rotatable
<b>Connectors</b>	2 x Speakon NL4MP in/out Coding: 1 +/- HiMid, 2 +/- loop thru
<b>Handles</b>	2 x
<b>Rigging / Fittings</b>	9 x M10 To be used with MultiRigg 35 mm pole mount
<b>Weight</b>	12,5 kg
<b>Size</b> height x width x depth	45,0 x 31,0 x 29,0 cm
<b>Order No.</b>	<b>01093</b>



## DIMENSIONS



4 x M10 Twinpoints for MultiRigg™



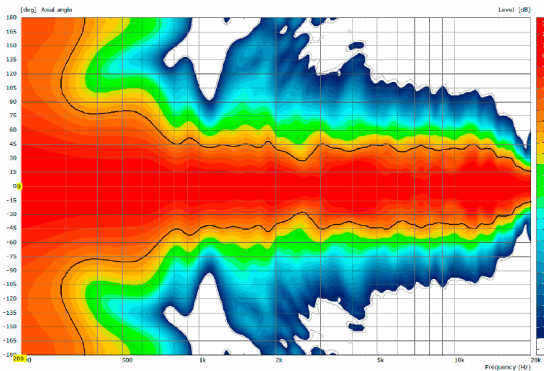
Controller Setups:



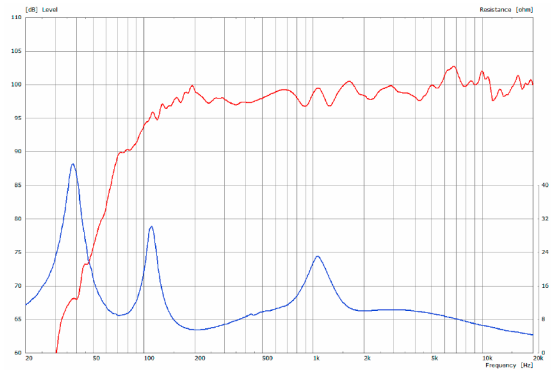
<https://www.seeburg.com/en/downloads>

## MEASUREMENTS

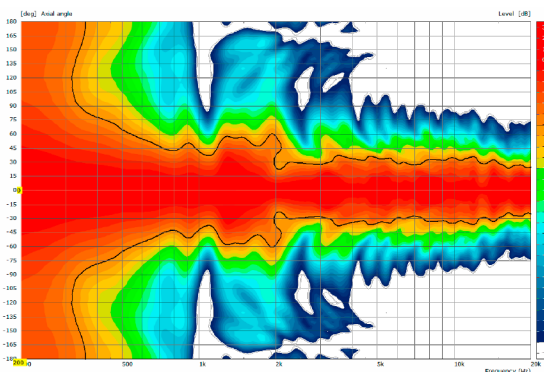
### 2D Directivity Plot - horizontal



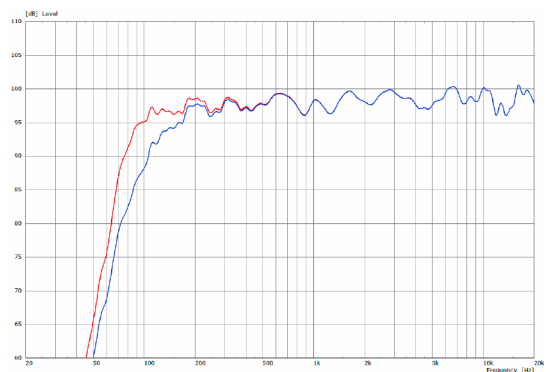
### Sensitivity 1 W @ 1 m + Impedance



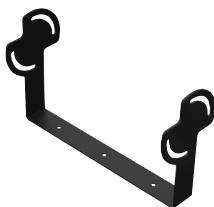
### 2D Directivity Plot - vertical



### Frequency Response with Presets



**Flying-Bracket**



for X 4,  
horizontal alignment,  
incl. (4 x M10 x 20 socket head  
screws, 4 x M10 washers,  
4 x rubber washers)  
Order No. **01201/X4/set**

**MultiRigg™**



swiveling fastening solution  
for horizontal and vertical alignment,  
for flown / ground stacked / mounted  
applications, incl. accessories  
(2 x knurled screws M10 x 20 mm,  
1 x handle screw M8 x 55 mm),  
max. load 50 kg  
Order No. **01360**

**MultiRigg™ light**



version for fixed installations,  
for horizontal and vertical alignment,  
tiltable vertical angle,  
incl. accessories (2 x M10 x 20 socket  
head screws), max. load 50 kg  
Order No. **01362**

**MultiTilt™**



Tilt adapter with adjustable tilt from  
0° to 37,5° (2,5° steps), integr. pole  
mount adapter with clamping device,  
2 x knurled screws (M10 x 20 mm),  
max. load 50 kg  
Order No. **01370**

**Knurled Screw**



M10 x 20 mm  
Order No. **73750/w** (RAL 9010)  
Order No. **73750**

**Knurled Head Nut**



reduction screw for fastening  
M10 Pole Mount Adapter (08126)  
Order No. **73755**

**Pole Mount Adapter**



35 mm ø → M10 x 16 mm,  
M8 x 20 star knob screw  
Order No. **08126**  
35 mm ø → M10 x 16 mm  
Order No. **08126/II**

**Steel Safety**



6 mm x 600 mm, black,  
max. load 22 kg (BGI 810-3),  
quick connector undetachably  
Order No. **01376/6**

**TV Spigot**



10 mm internal thread,  
28 mm Ø  
Order No. **08128**

**Ring Screw**



M10– DIN 580  
Order No. **73700** (zincd)  
Order No. **73700/sw** (black zincd)

**Quick Trigger Clamp**



max. load 100 kg  
Order No. **01223/100 kg**

**Quick Trigger Clamp - small**



M10, max. load 20 kg  
Order No. **01223/20 kg**



MultiRigg™light



MultiRigg™



## ACCESSORIES X 4

### Adapter



for X 4, X 6, X 8  
for mounting with Wall Mount (03034),  
incl. 2 x M10 x 20 socket head screws

Order No. **01198/w** (RAL 9010)  
Order No. **01198**

### Wall Mount



2 x M6 fixing holes (d=73 mm),  
1 x M10 fixing hole (center),  
max. load 25 kg

Order No. **03034/w** (RAL 9010)  
Order No. **03034**

### Wall Mount



bar: 269 mm, max. load 40 kg,  
incl. (M10 x 70 mm socket head screw,  
M10 hex lock nut and flat washer)

Order No. **08130/F/269/w** (RAL 9010)  
Order No. **08130/F/269**

### Wall Mount



with tilt unit, max. load 40 kg  
Order No. **08130**

### Cover



for X 4,  
padded  
Order No. **01225/X4**

### Rain Cover



for X 4,  
with zipper  
Order No. **01225/X4/outdoor**

### Flight Case



for 2 pcs. X 4 and 2 pcs. MultiRigg,  
partition walls, heavy duty, 9 mm  
birch multiplex, PVC coated black,  
6 x recessed sprung handles,  
1 x butterfly catch, 4 x 100 mm blue  
wheels (2 pcs. with brake), interior  
lined with felt  
Size (H x W x D): 63 x 61,5 x 59 cm  
Order No. **16560**



Flight Case

Rain Cover