

Multifunctional Coaxial Sound System X1

X1
COAXIAL



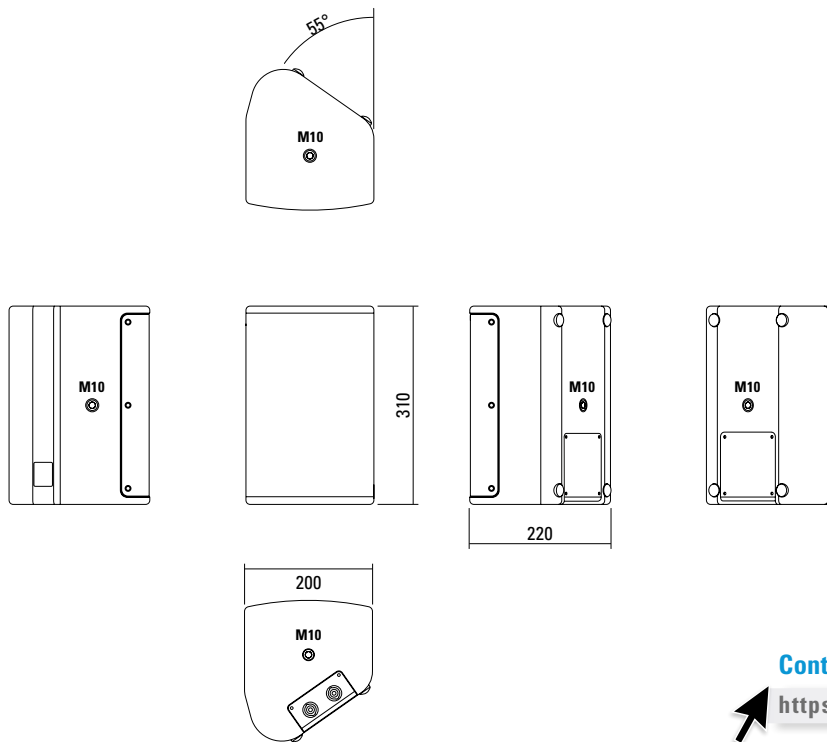
Multifunctional premium-class compact 2-way system. The coaxial configuration in combination with a carefully designed large-area horn ensures absolutely constant response even off the main axis. High-power Neodym drivers and long-excursion coils provide high efficiency and reduced distortion. Four M10 threaded mounting points are available to mount accessories for installation or mobile applications.

PRODUCT SPECIFICATIONS

Speaker Components	6,5" Nd (2" VC) / 1" Nd (1,7" VC)
Description	Multifunctional Coaxial Sound System
Power AES / Peak	200 W / 600 W
Impedance nominal	8 Ω
SPL 1 W / Peak @ 1 m	92 dB / 120 dB
Usable Range	80 Hz - 19 kHz (-6 dB)
Tuning Frequency excursion minimum	90 Hz
X - Overpoint acoustical	1,9 kHz
Coverage horizontal / vertical	90° x 60° - rotatable
Connectors	2 x Speakon NL4MP in/out Coding: 1 +/- HiMid, 2 +/- loop thru
Rigging / Fittings	4 x M10
Weight	5,5 kg
Size height x width x depth	31,0 x 20,0 x 22,0 cm
Order No.	01090



DIMENSIONS

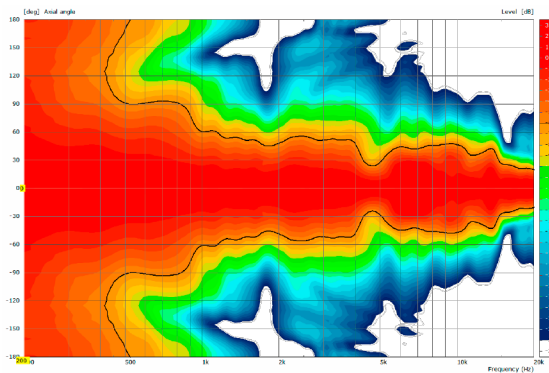


Controller Setups:

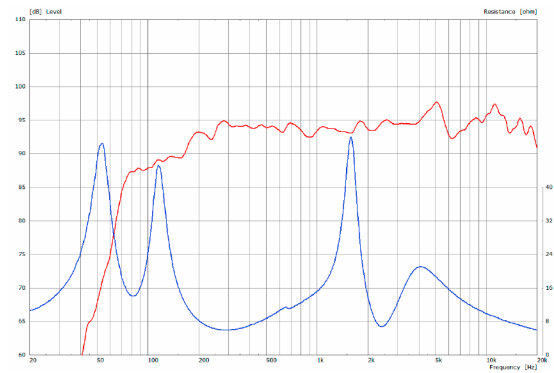
<https://www.seeburg.net/en/downloads>

MEASUREMENTS

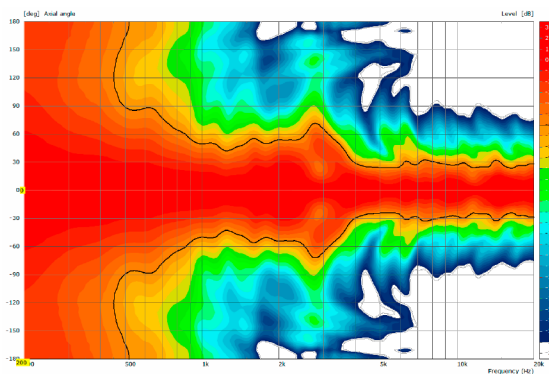
2D Directivity Plot - horizontal



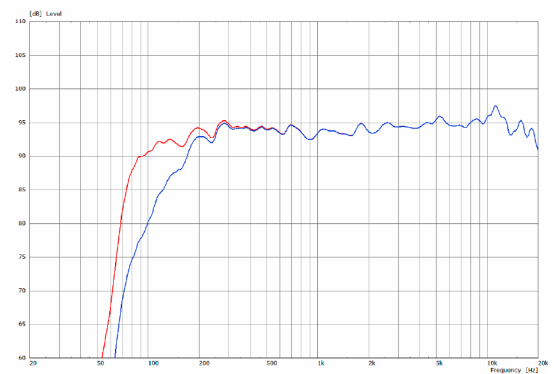
Sensitivity 1 W @ 1 m + Impedance



2D Directivity Plot - vertical



Frequency Response with Presets



Flying-Bracket



for X 1,
horizontal alignment,
incl. (4 x M10 x 20 socket head screws,
4 x M10 washer, 4 x rubber washer)
Order No. **01201/X1/set**

Flying L-Bracket



for A 1 / GL 8 / X 1 / X 2 / TS Nano,
horizontal and vertical alignment,
incl. (white version: 1 x M10 x 20
socket head screws, black version:
1 x M10 x 20 adjustable handle screw)
Order No. **01200/set/w** (RAL 9010)
Order No. **01200/set**

Handle Screw



for flying brackets,
adjustable
M10 x 20
Order No. **08375/20**

Pole Mount Adapter



35 mm \varnothing \rightarrow M10 x 16 mm,
M8 x 20 star knob screw
Order No. **08126**
35 mm \varnothing \rightarrow M10 x 16 mm
Order No. **08126/II**

Knurled Head Nut



reduction screw for fastening
M10 Pole Mount Adapter (08126)
Order No. **73755**

Ring Screw



M10– DIN 580
Order No. **73700** (zincd)
Order No. **73700/sw** (black zincd)

Steel Safety



4 mm x 600 mm, black,
max. load 10 kg (BGI 810-3),
quick connector undetachably
Order No. **01376/4**

ACCESSORIES X 1

Wall Mount



for permanent installation,
incl. tilt angle stop,
M10, max. load 15 kg

Order No. **08131/F/w** (RAL 9010)
Order No. **08131/F**

Bag



for 2 x A 1 / 2 x TS Nano / 2 x X 1,
padded with pocket for accessories
Order No. **01249**

Flange



with ball and socket joint,
with additional locking screw,
M10 x 15, max. load 15 kg

Order No. **08125**

Wall Mount



ball and socket joint flange (08125)
+ 08125/plate

Order No. **08125/set**

Quick Trigger Clamp - small



M10, max. load 20 kg

Order No. **01223/20 kg**

Truss Clamp



incl. M10 Adapter,
max. load 15 kg

Order No. **01221**

