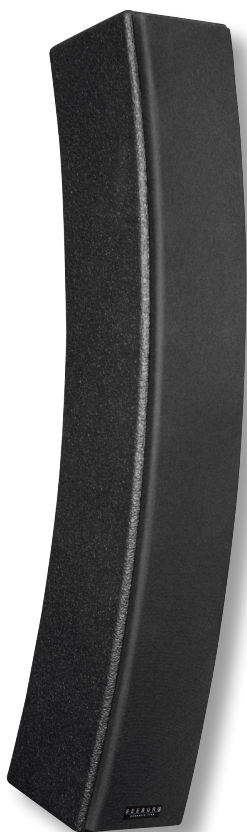


L 16j



L 8c

Ultra thin, low-profile loudspeakers for sophisticated applications in acoustically problematic rooms like churches, auditoriums and theatres. The horizontal coverage and the coupling of the 3" broadband drivers have been optimised by the use of waveguides. The L-Series comprises a total of six models of varying line length and curving and which can be combined as desired. The system is suitable for tackling a multitude of sound applications.



Speakon connectors are a standard feature.



Other colours on request.

## PRODUCT SPECIFICATIONS

L 4c



L 8c



L 8j



L 8i



L 16j

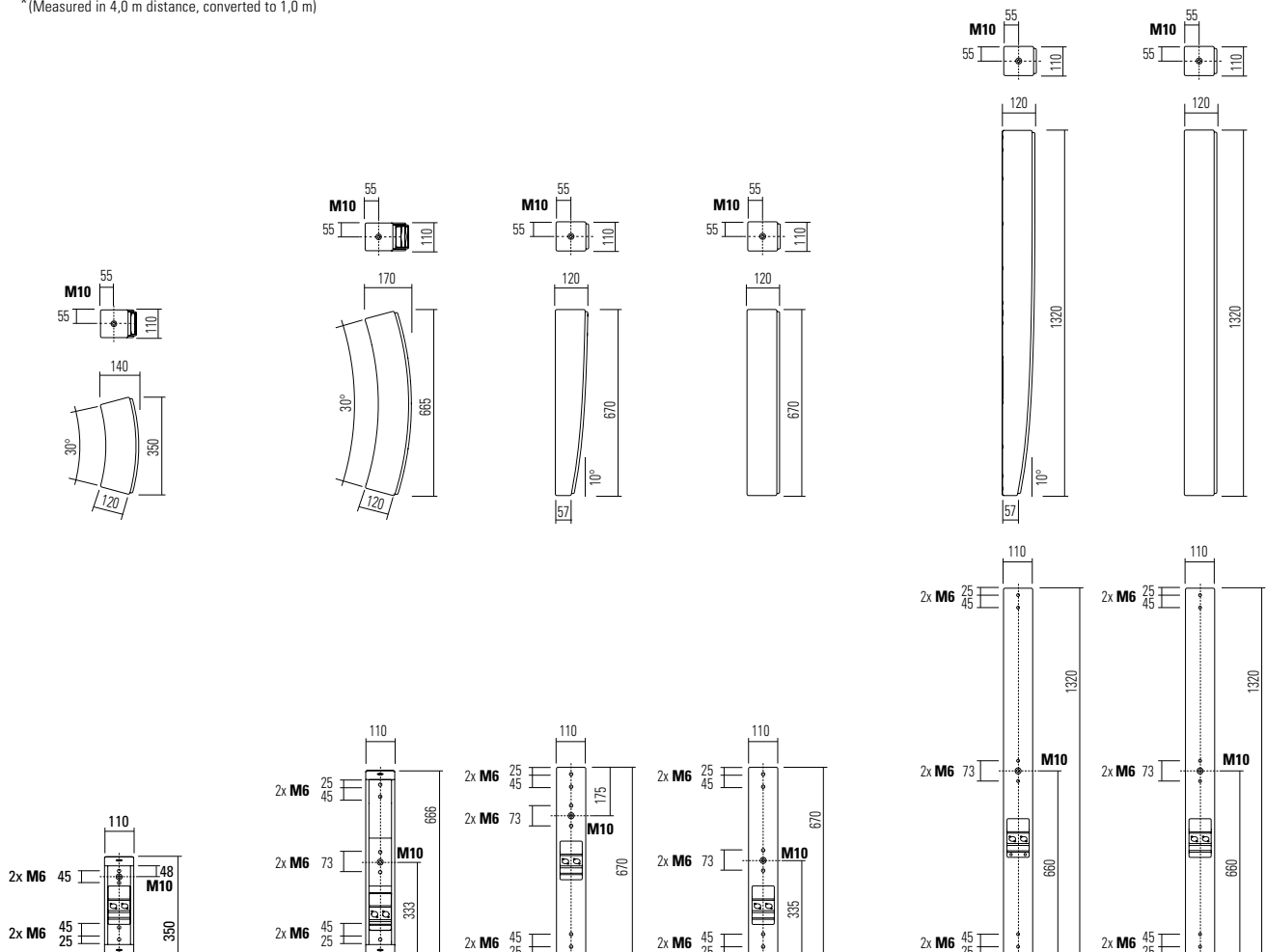


L 16i



<b>Speaker Components</b>	4 x 3" wideband	8 x 3" wideband			16 x 3" wideband	
<b>Description</b>	Curved Cylindric Wave Radiator	Curved	Curved	Straight	Curved	Straight
<b>Powerhandling</b> AES / Peak	80 W / 240 W	160 W / 480 W			320 W / 960 W	
<b>Impedance</b> nominal	8 Ω (32 Ω optional)	16 Ω (4 Ω / 64 Ω optional)			8 Ω (32 Ω / 128 Ω optional)	
<b>SPL</b> 1 W / Peak @ 1 m	92 dB / 112 dB (*)	94 dB / 118 dB (*)			96 dB / 124 dB (*)	
<b>Usable Range</b> - 6 dB	150 Hz - 16 kHz	150 Hz - 16 kHz			150 Hz - 16 kHz	
<b>Coverage</b> horizontal / vertical	80° x 37°	80° x 37°	80° x 17°	80° x 7°	80° x 17°	80° x 7°
<b>Splay Angle</b>	30°	30°	10°	0°	10°	0°
<b>Connectors</b>	2 x Neutrik Speakon NL4MP in/out, Coding: 1 +/- HiMid, 2 +/- loop thru, (Phoenix on request)					
<b>Handles</b>	---	---	---	---	---	---
<b>Rigging / Fittings</b>	3 x M10 / 4 x M6	3 x M10 / 6 x M6			3 x M10 / 6 x M6	
<b>Coating and Finish</b>	Black Polyurea coating and black textile cover, other colours on request					
<b>Weight</b>	3,0 kg	5,0 kg	5,0 kg	5,0 kg	9,0 kg	9,0 kg
<b>Size</b> height x width x depth	35,0 x 11,0 x 12,0 cm	67,0 x 11,0 x 12,0 cm			132,0 x 11,0 x 12,0 cm	
<b>Order No.</b>	<b>00710</b>	<b>00720</b>	<b>00725</b>	<b>00715</b>	<b>00735</b>	<b>00730</b>

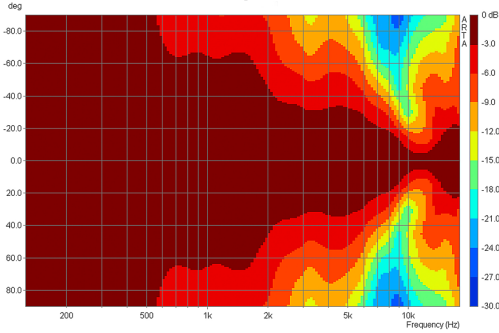
\*(Measured in 4,0 m distance, converted to 1,0 m)



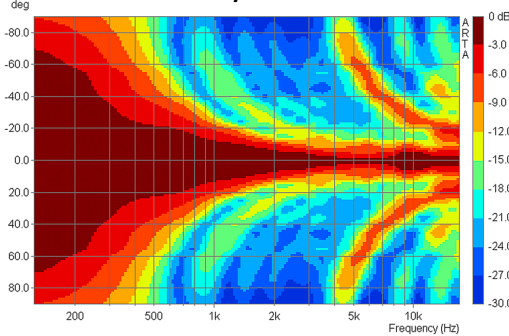
**Conventional column speaker**

Undefined horizontal dispersion below 2 kHz, narrow beam at higher frequencies (20° at 10 kHz).  
Vertically: Insufficient coupling above 5 kHz leading to so called "side lobes".

**horizontal - 2D Directivity Plot**



**vertikal - 2D Directivity Plot**

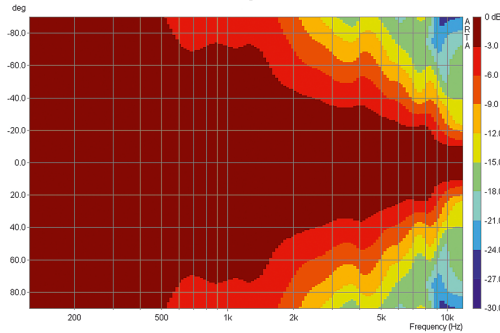


The acoustical coupling of the L-Series single sources leads to strong vertical beaming, making for longer throw and a more homogeneous sound dispersion. The curved design (j- or c- versions) improves the dispersion for the near field. With increasing length of the total column, the ratio of direct sound to reflections will be improved, resulting in more gain before feedback and notably better speech intelligibility.

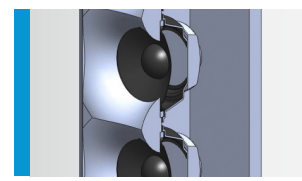
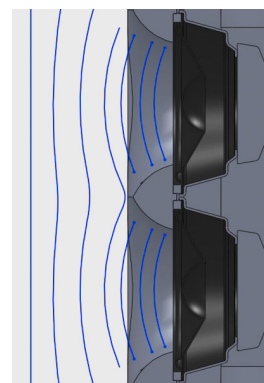
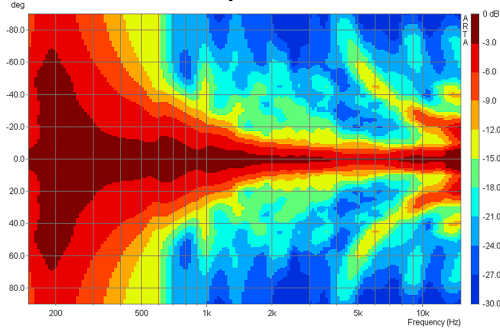
**L 8i - Column speaker with waveguide-technology**

Enhanced horizontal directivity at the mid frequencies, notable widening at high frequencies.  
Vertically: Cylindric wave characteristics up to 9 kHz, strong reduction of the side lobes.

**horizontal - 2D Directivity Plot**



**vertikal - 2D Directivity Plot**



Optimized waveguides for improved vertical coupling and smooth horizontal dispersion.

**Controller Setups:**

<http://www.seeburg.net/en/downloads>

**Dispersion: L 16i and L 16j**

The L 16j system is suited for distances of 2 m to 25 m. Longer throw can be accomplished by adding a L 16i on top.

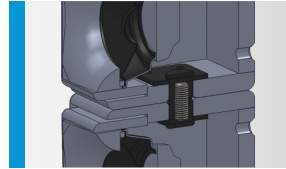


**Perfect sound from the first to the last row of seats.**

**All six versions of the L-Series speakers can be combined as desired.**

Special accessories are available for installation.

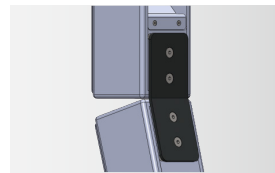
The free software EASE Focus can be used to simulate the acoustical results. For more complex designs, the data for simulation software like EASE, Ulysses and CATT-acoustic is available.



Connection of two L-Series elements by an **M10 thread bolt** and washer. The two elements can be faced in different horizontal directions.



Mounting to the wall by a **bracket** with elongated hole. This also enables a slight inclination of the speaker line.



Connection of two elements by **tilt adapter**. The main dispersion is preadjusted in two directions. Tilt adapters are available with 5°, 10° and 15° angles.



For wall mounting above the field of vision, **plates for depth compensation** can be used to incline the system without significantly increasing the distance to the wall.



**L 16i / L 16j**  
Classic long throw application.



**L 8i / L 8c / L 4c**  
Application for higher mounting position.



**L 16i / L 8j**  
L8j turned inside for better horizontal coverage of the near field.



**L 8i / L 8i / L 8j**  
Three L8 mounted to the wall above the field of vision with small distance to the wall. Separately powered, with delays.

**Pole Mount**



35 mm  $\varnothing$  → M10,  
adjustable  
Order No. **08126/adj**  
Order No. **08126/adj/w** (RAL 9010)

**Pole Mount**



for L-Series,  
2 x fixing holes (d=73 mm),  
adjustable  
Order No. **08126/II/L-Series**

**Pole Mount Adapter**



35 mm  $\varnothing$  → M10 x 16 mm,  
M8 x 20 star knob screw  
Order No. **08126**  
Order No. **08126/w** (RAL 9010)

**Pole Mount Adapter**



35 mm  $\varnothing$  → M10 x 16 mm  
Order No. **08126/II**  
Order No. **08126/II/w** (RAL 9010)

**Knurled Head Nut**



reduction screw for fastening  
M10 Pole Mount Adapter (08126)  
Order No. **73755**

**Truss Clamp**



incl. M10 Adapter,  
max. load 15 kg  
Order No. **01221**

**Steel Safety**



4 mm x 600 mm, black,  
max. load 10 kg (BGI 810-3),  
quick connector undetachably  
Order No. **01376/4**

**Flange**



with ball and socket joint,  
with additional locking screw,  
M10 x 15, max. load 15 kg  
Order No. **08125**

**Wall Mount**



ball and socket joint flange (08125) +  
08125/plate  
Order No. **08125/set**

**Wall Mount**



for L 8 / L 16 / A 2 / A 3  
using fixing points d= 73 mm  
Order No. **08132/w** (RAL 9010)  
Order No. **08132**

**Wall Mount**



for permanent installation,  
incl. tilt angle stop,  
M10, max. load 15 kg  
Order No. **08131/F/w** (RAL 9010)  
Order No. **08131/F**

**Wall Mount**



2 x M6 fixing holes (d=73 mm),  
1 x M10 fixing hole (center),  
max. load 25 kg  
Order No. **03034/w** (RAL 9010)  
Order No. **03034**



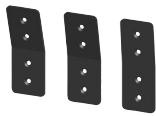
## ACCESSORIES L-SERIES

### Angle Bracket



for L-Series, 90° angle,  
depth: 75 mm / 90 mm / 110 mm  
Order No. **08135/75**  
Order No. **08135/90**  
Order No. **08135/110**  
also available in white (RAL 9010) .../w

### Tilt Adapter



for L-Series, 0° - 5° - 10° - 15°  
Order No. **08149/tilt/0°**  
Order No. **08149/tilt/5°**  
Order No. **08149/tilt/10°**  
Order No. **08149/tilt/15°**

### Plate for Depth Compensation



for L-Series  
Order No. **08149/depth**  
Order No. **08149/depth/w** (RAL 9010)

### Thread Bolt



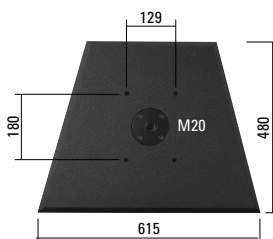
M10 x 30 mm,  
incl. rubber washer  
Order No. **08149/bolt**

### Speaker Pole



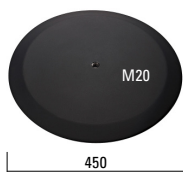
M20, adjustable  
Order No. **03022**

### Base Plate, Small



with M20 flange,  
61,5 x 48,0 cm  
Order No. **01278**  
Order No. **01278/w** (RAL 9010)

### Base Plate, Round



M20, ø 450 mm, height: 21 mm  
black zinc die-cast, felt strips on the  
bottom, weight: 6,7 kg  
Order No. **01278/round**

### Bag



Universal bag for  
Small Base Plate and accessories,  
with side pocket  
51 cm x 62 cm x 23 cm  
(height x width x depth)  
Order No. **01227**

### Bag



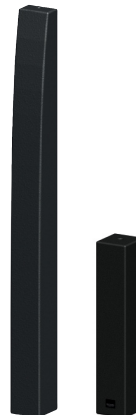
for 2 x L 16 and accessories  
Order No. **01231**

### Tool Set for Monopods



consisting of: wooden plate  
with M20 and M10 screws,  
matching keys, magnetic bits  
Order No. **00750/tool**

### Monopods for L-Series



Size and design like L 16j,  
to be fixed with M20 on bottom  
and M10 on top  
Order No. **00750/L16j**  
Size and design like L 8i,  
to be fixed with M20 on bottom  
and M10 on top  
Order No. **00750/L8i**



Tool Set für Monopods