



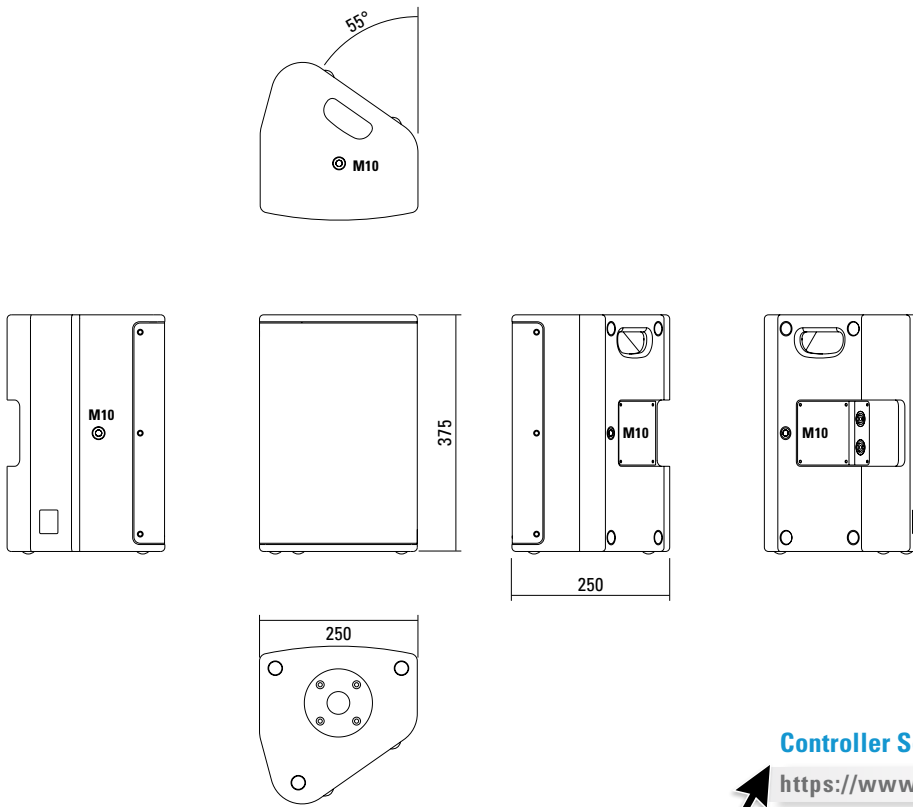
**Multifunctional premium-class compact 2-way system. The coaxial configuration in combination with a carefully designed large-area horn ensures absolutely constant response even off the main axis. High-power Neodym drivers and long-excursion coils provide high efficiency and reduced distortion. Three M10 threaded mounting points are available to mount accessories for installation or mobile applications.**

## PRODUCT SPECIFICATIONS

<b>Speaker Components</b>	8" Nd (2,5" VC) / 1" Nd (1,7" VC)
<b>Description</b>	Multifunctional Coaxial Sound System
<b>Power</b> AES / Peak	250 W / 750 W
<b>Impedance</b> nominal	8 Ω
<b>SPL</b> 1 W / Peak @ 1 m	95 dB / 124 dB
<b>Usable Range</b>	70 Hz - 19 kHz (-6 dB)
<b>Tuning Frequency</b> Excursion minimum	80 Hz
<b>X - Overpoint</b> acoustical	1,6 kHz
<b>Coverage</b> horizontal / vertical	90° x 60° - rotatable
<b>Connectors</b>	2 x Neutrik Speakon NL4MP in/out Coding: 1 +/- HiMid, 2 +/- loop thru
<b>Handles</b>	1 x
<b>Rigging / Fittings</b>	3 x M10 35 mm pole mount
<b>Weight</b>	8 kg
<b>Size</b> height x width x depth	37,5 x 25,0 x 25,0 cm
<b>Order No.</b>	<b>01091</b>



## DIMENSIONS

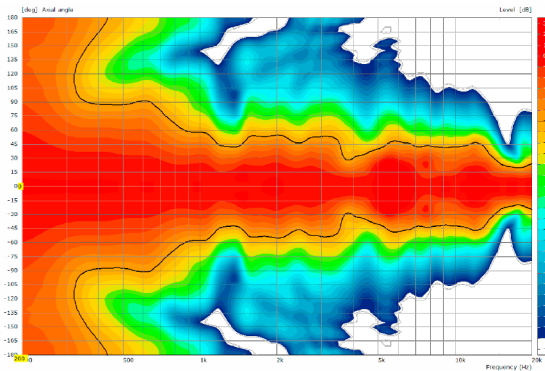


### Controller Setups:

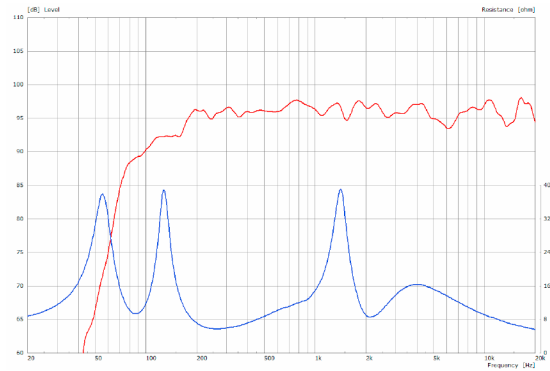
<https://www.seeburg.net/en/downloads>

## MEASUREMENTS

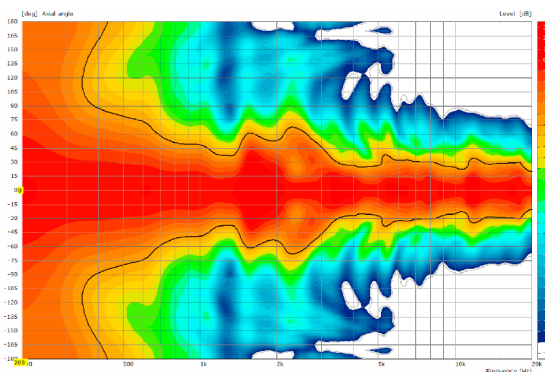
### 2D Directivity Plot - horizontal



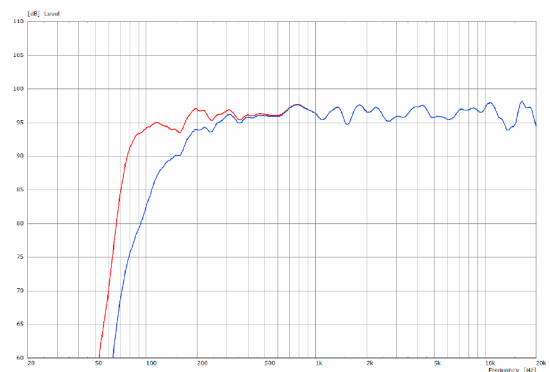
### Sensitivity 1 W @ 1 m + Impedance



### 2D Directivity Plot - vertical



### Frequency Response with Presets



## ACCESSORIES X 2

### Flange



with ball and socket joint,  
with additional locking screw,  
M10 x 15, max. load 15 kg  
Order No. **08125**

### Flange



35 mm Ø → M10,  
Order No. **08126**

### Truss Clamp



incl. M10 Adapter,  
max. load 15 kg  
Order No. **01221**

### Ring Screw



M10– DIN 580  
Order No. **73700**

### Steel Safety



4 mm x 600 mm, black,  
max. load 10 kg (BGI 810-3),  
quick connector undetachably  
Order No. **01376/4**

### Wall Mount



M10, max. load 15 kg, with stargrip  
Order No. **08131**  
Order No. **08131/W** (white)



For permanent installation,  
incl. tilt angle stop  
Order No. **08131/F**  
Order No. **08131/F/W** (white)

### Wall Mount



with tilt unit, max. load 40 kg  
Order No. **08130**

### Bag



for 2 x TSM 8 / 2 x X 2, padded  
with pocket for accessories  
Order No. **01245**