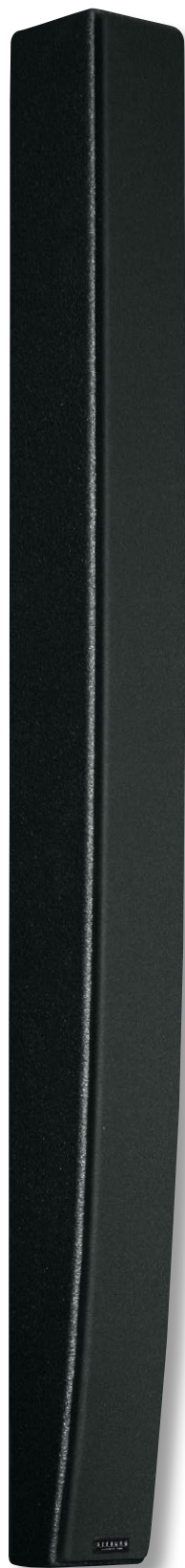


Curved & Straight Cylindric Wave Radiators **L-Series**

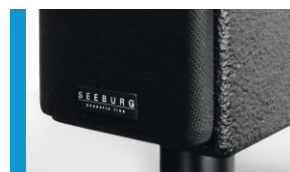


L 16j



L 8c

Ultra thin, low-profile loudspeakers for sophisticated applications in acoustically problematic rooms like churches, auditoriums and theatres. The horizontal coverage and the coupling of the 3" broadband drivers have been optimised by the use of waveguides. The L-Series comprises a total of six models of varying line length and curving and which can be combined as desired. The system is suitable for tackling a multitude of sound applications.



Speakon connectors are a standard feature.



Other colours on request.

PRODUCT SPECIFICATIONS

L 4c



L 8c



L 8j



L 8i



L 16j

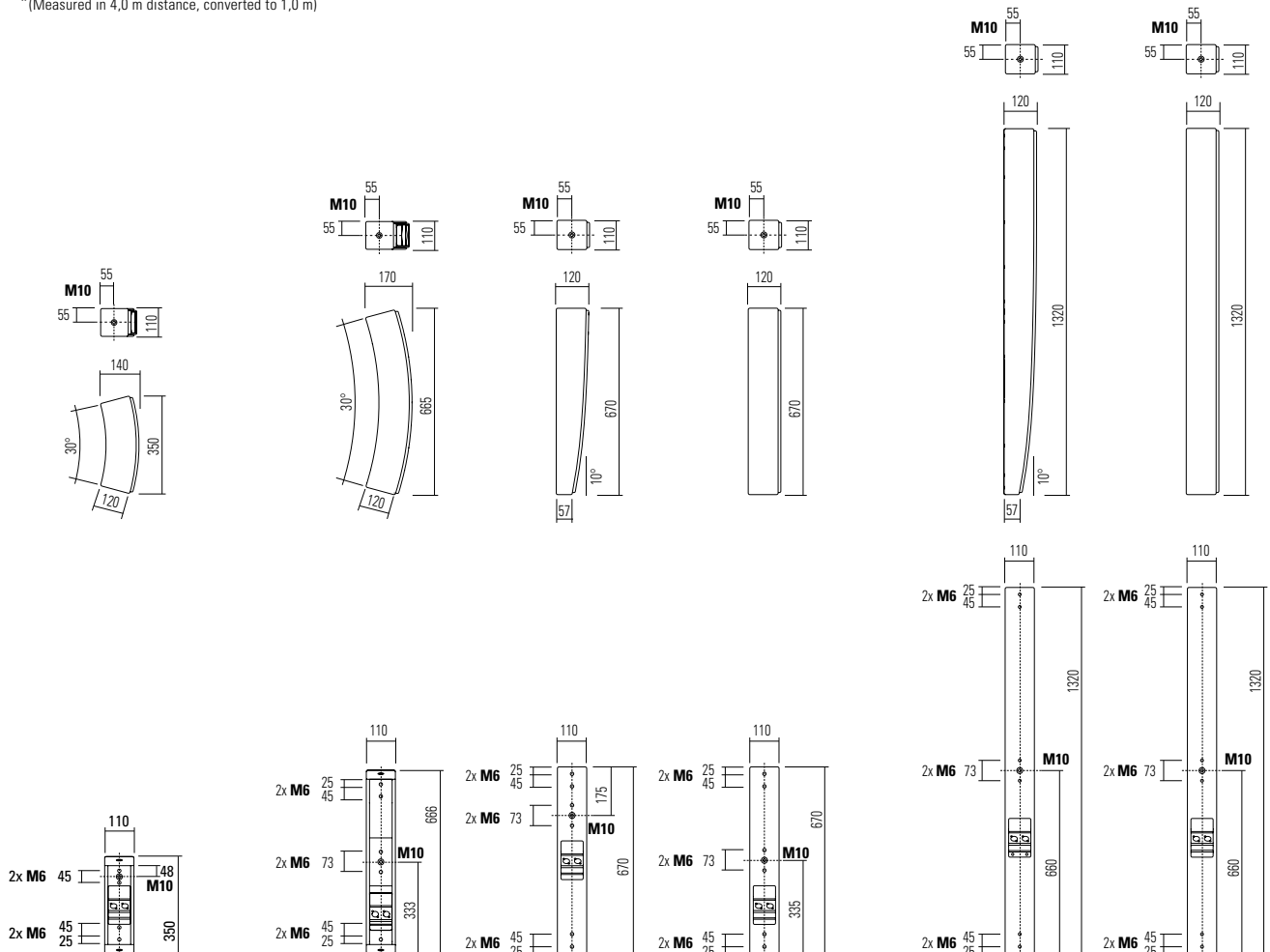


L 16i



Speaker Components	4 x 3" wideband	8 x 3" wideband			16 x 3" wideband	
Description	Curved Cylindric Wave Radiator	Curved	Curved	Straight	Curved	Straight
Powerhandling AES / Peak	80 W / 240 W	160 W / 480 W			320 W / 960 W	
Impedance nominal	8 Ω (32 Ω optional)	16 Ω (4 Ω / 64 Ω optional)			8 Ω (32 Ω / 128 Ω optional)	
SPL 1 W / Peak @ 1 m	92 dB / 112 dB (*)	94 dB / 118 dB (*)			96 dB / 124 dB (*)	
Usable Range -6 dB	150 Hz - 16 kHz	150 Hz - 16 kHz			150 Hz - 16 kHz	
Coverage horizontal / vertical	80° x 37°	80° x 37°	80° x 17°	80° x 7°	80° x 17°	80° x 7°
Splay Angle	30°	30°	10°	0°	10°	0°
Connectors	2 x Neutrik Speakon NL4MP in/out, Coding: 1 +/- HiMid, 2 +/- loop thru, (Phoenix on request)					
Handles	---	---	---	---	---	---
Rigging / Fittings	3 x M10 / 4 x M6	3 x M10 / 6 x M6			3 x M10 / 6 x M6	
Coating and Finish	Black Polyurea coating and black textile cover, other colours on request					
Weight	3,0 kg	5,0 kg	5,0 kg	5,0 kg	9,0 kg	9,0 kg
Size height x width x depth	35,0 x 11,0 x 12,0 cm	67,0 x 11,0 x 12,0 cm			132,0 x 11,0 x 12,0 cm	
Order No.	00710	00720	00725	00715	00735	00730

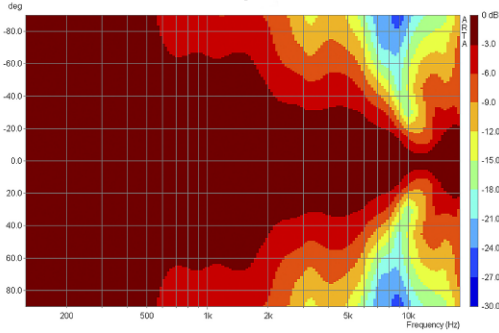
*(Measured in 4,0 m distance, converted to 1,0 m)



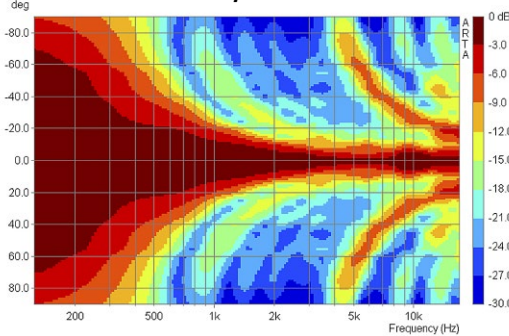
Conventional column speaker

Undefined horizontal dispersion below 2 kHz, narrow beam at higher frequencies (20° at 10 kHz).
Vertically: Insufficient coupling above 5 kHz leading to so called "side lobes".

horizontal - 2D Directivity Plot



vertikal - 2D Directivity Plot

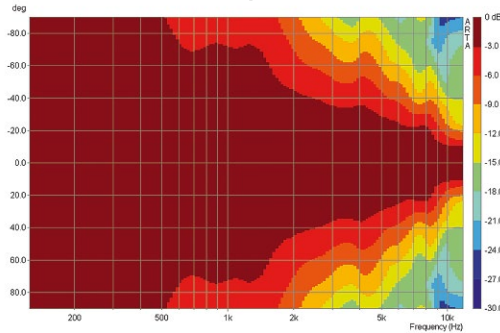


The acoustical coupling of the L-Series single sources leads to strong vertical beaming, making for longer throw and a more homogeneous sound dispersion. The curved design (j- or c- versions) improves the dispersion for the near field. With increasing length of the total column, the ratio of direct sound to reflections will be improved, resulting in more gain before feedback and notably better speech intelligibility.

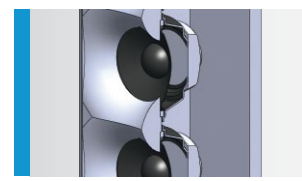
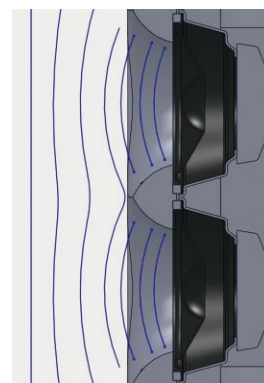
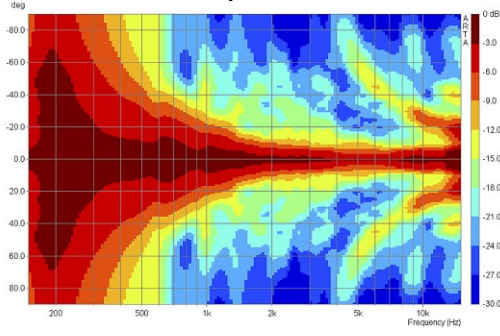
L 8i - Column speaker with waveguide-technology

Enhanced horizontal directivity at the mid frequencies, notable widening at high frequencies.
Vertically: Cylindric wave characteristics up to 9 kHz, strong reduction of the side lobes.

horizontal - 2D Directivity Plot



vertikal - 2D Directivity Plot



Optimized waveguides for improved vertical coupling and smooth horizontal dispersion.

Dispersion: L 16i and L 16j

The L 16j system is suited for distances of 2 m to 25 m. Longer throw can be accomplished by adding a L 16i on top.



Perfect sound from the first to the last row of seats.

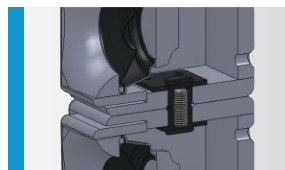
All six versions of the L-Series speakers can be combined as desired.

Special accessories are available for installation.

The free software EASE Focus can be used to simulate the acoustical results. For more complex designs, the data for simulation software like EASE, Ulysses and CATT-acoustic is available.

Controller Setups are available on our website:

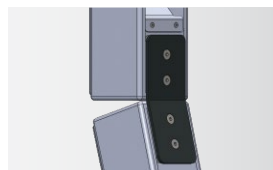
 <http://www.seeburg.net/Controller-Setups>



Connection of two L-Series elements by an M10 thread bolt and washer. The two elements can be faced in different horizontal directions.



Mounting to the wall by a bracket with elongated hole. This also enables a slight inclination of the speaker line.



Connection of two elements by tilt adapter. The main dispersion is preadjusted in two directions. Tilt adapters are available with 5°, 10° and 15° angles.



For wall mounting above the field of vision, plates for depth compensation can be used to incline the system without significantly increasing the distance to the wall.



L 16i / L 16j
Classic long throw application.



L 8i / L 8c / L 4c
Application for higher mounting position.



L 16i / L 8j
L8j turned inside for better horizontal coverage of the near field.



L 8i / L 8i / L 8j
Three L8 mounted to the wall above the field of vision with small distance to the wall. Separately powered, with delays.

Tilt Adapter



for L-Series, 0° - 5° - 10° - 15°
 Order No. **08149/tilt/0°**
 Order No. **08149/tilt/5°**
 Order No. **08149/tilt/10°**
 Order No. **08149/tilt/15°**

Angle Bracket



for L-Series
 Order No. **08149/angle bracket**

Plate for Depth Compensation



for L-Series
 Order No. **08149/depth compensation**

Pole Mount



for L-Series,
 M10 x 35 mm,
 adjustable
 Order No. **08126/adj**

Flange



for flying brackets,
 M10 x 35 mm,
 Order No. **08126**

Speaker Pole



M20, with wind up, K&M
 Order No. **03023**



M20, adjustable, K&M
 Order No. **03022**

Thread Bolt



M10 x 30 mm, incl. rubber washer
 Order No. **08149/bolt**

Wall Mount



M10, 15 kg max.
 Order No. **08131**
 M10, 15 kg max., white
 Order No. **08131/ws**

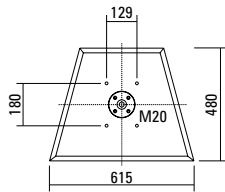
Wall Mount



Order No. **03034**

ACCESSORIES L-SERIES

Small Base Plate



61,5 x 48,0 cm
with M20 flange
Order No. **01278/M20**

Bag



for 2 x L 16 and accessories
Order No. **01231**

Bag



Universal bag for
small base plate and accessories
with side pocket
62,0 x 23,0 x 51,0 cm
Order No. **01227**

Tool Set for Powerstick



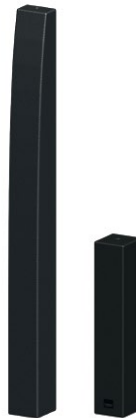
consisting of: wooden plate
with M20 and M10 screws,
matching keys, magnetic bits
Order No. **00750/tool**

Powerstick



for L-Series and multiple use,
2 x 500 W RMS, DSP, 4 x presets,
size (h x w x d): 50,8 x 8,5 x 8,2 cm
Order No. **00750/dp**

Monopods for L-Series



Size and design like L 16j,
to be fixed with M20 on bottom
and M10 on top
Order No. **00750/L16j**
Size and design like L 8i,
to be fixed with M20 on bottom
and M10 on top
Order No. **00750/L8i**