



The construction principle of the high powered K 20 mid-high cabinet allows for flexibility of use in horizontal or vertical orientations. Optimised placement of the 2 x 10" / 1.4" drivers in relation to one another ensures a very precise phase and coverage characteristic. For installation applications, the universal MultiRigg™ be used to mount the system. The K 20 is available in a self-powered version, and in a version with a passive crossover. 2 different horn forms are available to better cover various Sound Reinforcement situations.

## PRODUCT SPECIFICATIONS

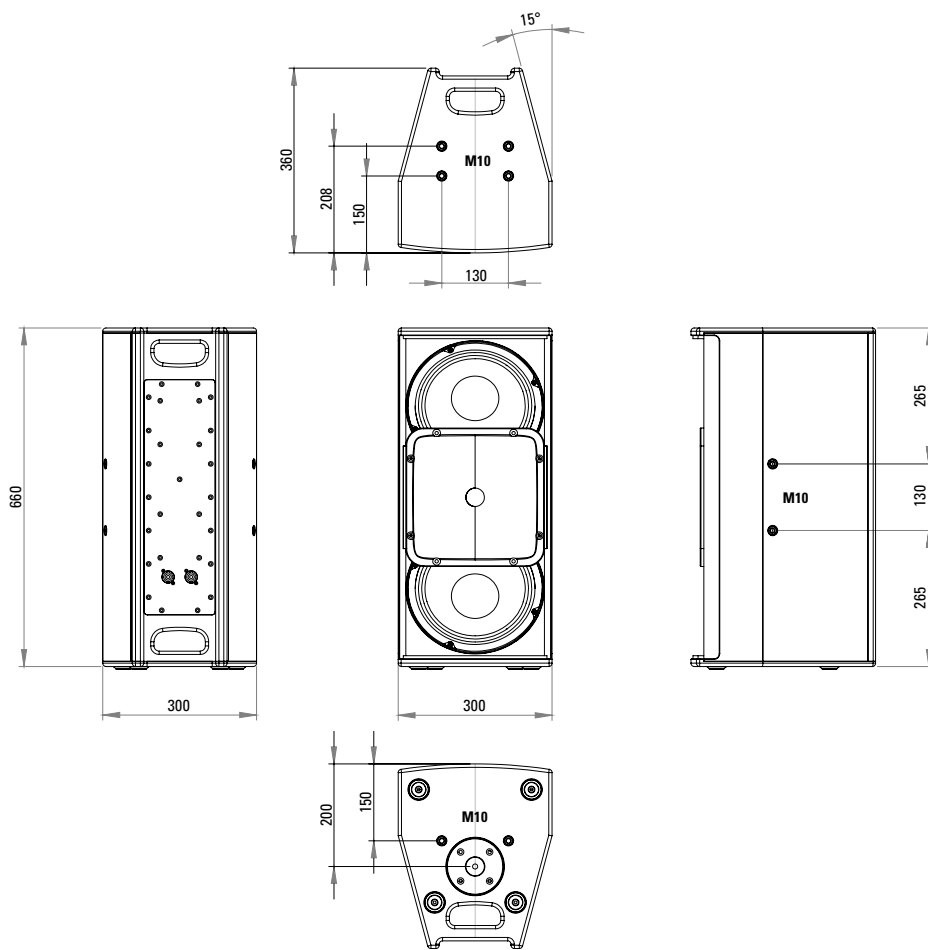
	<b>K 20</b>	<b>K 20 dp</b>
<b>Speaker Components</b>	2 x 10" Nd / 1,4" Nd	2 x 10" Nd / 1,4" Nd
<b>Description</b>	High Power Hi-Mid System	Digitally Powered HiMid System
<b>Power</b> AES / Peak	800 W / 2400 W	---
<b>Amp Power</b> AES	---	LF: 1000 W / 110-230 V HF: 350 W / 110-230 V
<b>Impedance</b> nominal	4 Ω	---
<b>Rated Current</b>	----	t.b.a.
<b>SPL</b> 1 W / Peak @ 1 m	100 dB / 134 dB	--- / 134 dB
<b>DSP</b>	---	HDLM FPGA Processing 32 bit floating point
<b>Latency</b>	---	0,8 ms (analog in to analog out)
<b>Usable Range</b>	70 Hz - 18 kHz (-6 dB)	70 Hz - 18 kHz (-6 dB)
<b>Tuning Frequency</b> excursion minimum	80 Hz	80 Hz
<b>X-Overpoint</b> acoustical	900 Hz	900 Hz
<b>Coverage</b> horizontal / vertical	90° x 60° (60° x 50°), rotatable	90° x 60° (60° x 50°), rotatable
<b>Connectors</b>	2 x Neutrik Speakon NL4MP in/out Coding: 1 +/- HiMid, 2 +/- loop thru	Neutrik XLR in/thru Neutrik PowerCon in/thru
<b>Handles</b>	2 x	2 x
<b>Rigging / Fittings</b>	10 x M10 for MultiRigg™ 35 mm Pole Mount	10 x M10 for MultiRigg™ 35 mm Pole Mount
<b>Weight</b>	22,5 kg	22 kg
<b>Size</b> height x width x depth	66,0 x 30,0 x 36,0 cm	66,0 x 30,0 x 36,0 cm
<b>Order No.</b>	<b>01024/90°</b> (90° x 60° Version) <b>01024/60°</b> (60° x 50° Version)	<b>01024/dp/90°</b> (90° x 60° Version) <b>01024/dp/60°</b> (60° x 50° Version)



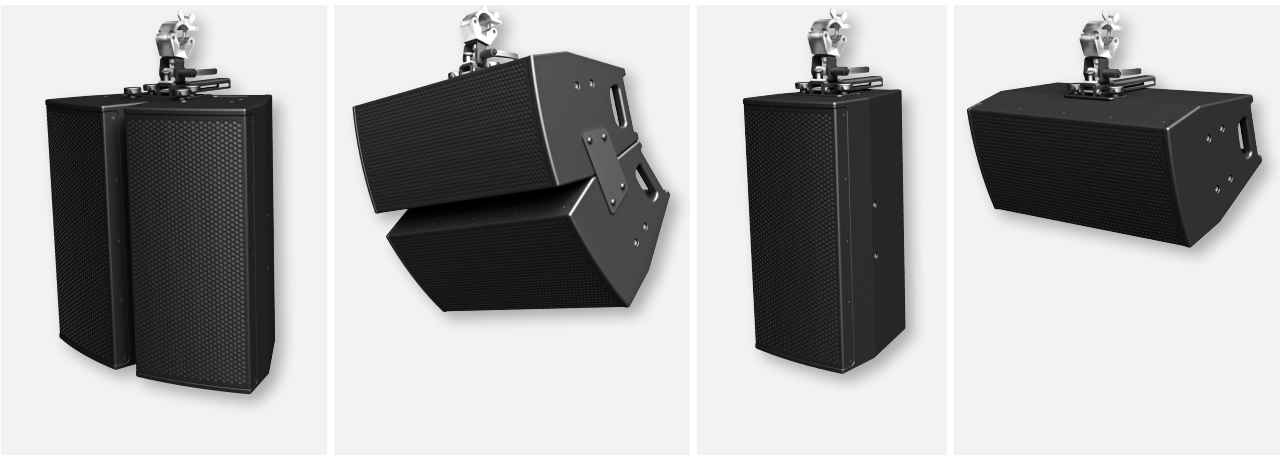
Simple installation with the universal MultiRigg™.



## DIMENSIONS

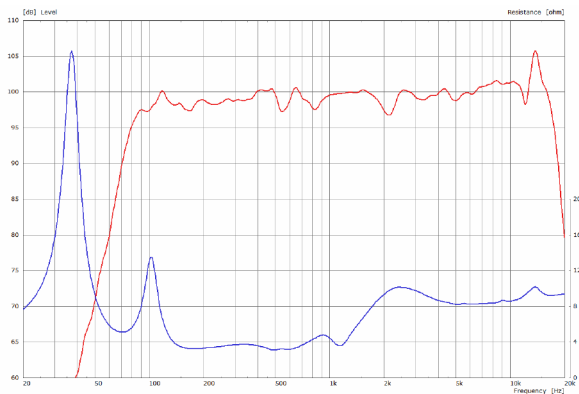


## APPLICATIONS

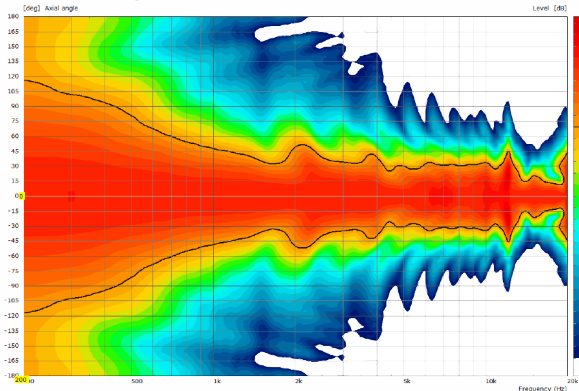


# MEASUREMENTS

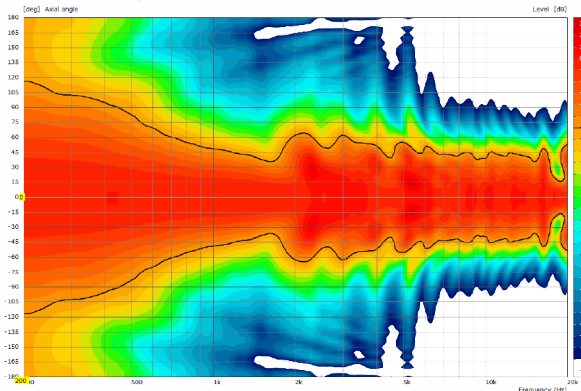
### K 20 - Sensitivity 1 W @ 1 m + Impedance with Preset



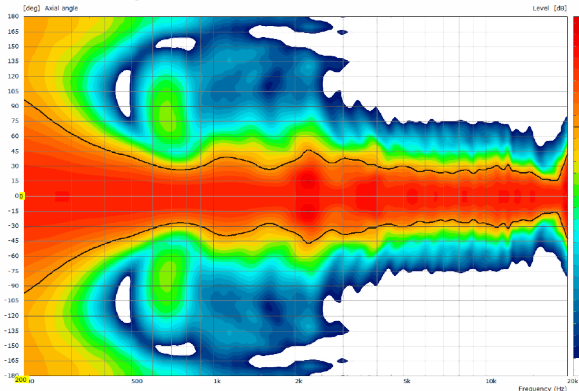
### 2D Directivity Plot - horizontal - 60° x 50°



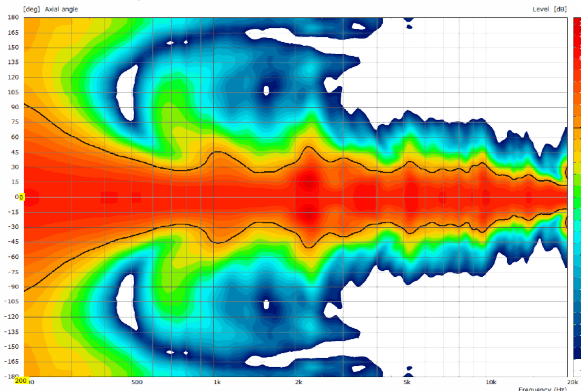
### 2D Directivity Plot - horizontal - 90° x 60°



### 2D Directivity Plot - vertikal - 60° x 50°



### 2D Directivity Plot - vertikal - 90° x 60°



**The K 20 dp features integrated digital amplifier electronics with a DSP controller. Various factory-configured presets and volume settings can be selected.**

High-grade electronic components from the industrial sector and a first-class circuit design ensure excellent audio quality with low distortion and a minimal noise floor.

Highly efficient and "intelligent" limiter systems ensure optimum protection against overload, without restricting the possibilities offered by this high-performance sound system.

# K20 dp

digitally powered Sound System

**Serial No.:**

Amp Power AES	1000W LF / 350W HF
max.SPL @ 1m	134 dB
Usable Range	70 Hz - 18 kHz
Tuning Frequency	80 Hz
Coverage hor./ver.	90° x 60° rotatable
Weight	22 kg



Made in Germany  
www.seeburg.net



**Caution**

Only use the dedicated hardware to fly the K20 units

**Presets**

**Flat**

This setting provides a linear frequency response with a neutral sound characteristics. Standard setting for many applications.

**High Boost**

For use on long distances.

**Boost**

Similar to the „Flat“ preset, but with increased low end response.

**Soft**

Reduces the level in the frequency range from 2.5 - 5 kHz, to which the ear is particularly sensitive. This setting is recommended for high level reproduction of highly compressed music tracks.

**Mode - key**

Switches between control modes Status, Level and Presets.

**Set - key**

Setting of various values and Mute on / off.

**Level**

Adjustment in 3 dB steps (-6 dB to +3 dB).

**Status**

**Mute LED**

Red light when the system is muted or under technically critical conditions.

**Limit LED**

Yellow light when the limiter is restricting the level.

**Signal LED**

Green light when the input signal exceeds -20 dBu.

**Power LED**

Green light when the system is switched on.

**XLR**

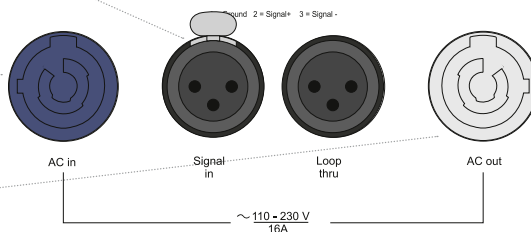
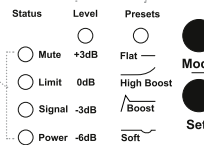
Symmetrical analog input max. Input +25 dBu. Effective filter protection against HF interference and DC Voltages. Electronically balanced to prevent noise.

**PowerCon (blue)**

Power supply ~ 110-230 V / 16 A max.

**PowerCon (grey)**

~ 110-230 V / 16 A max. loop through connector



**MultiRigg™**



for K 20,  
swiveling fastening solution  
for horizontal and vertical alignment,  
for flown / ground stacked / mounted  
applications, incl. accessories  
(2 x star knob screws M10 x 18 mm,  
1 x handle screw M10 x 60 mm)  
Order No. **01360**

**Doughty Trigger Clamp**



max. load 200 kg  
Order No. **01222**

**Connector**



K 20 -> K 20,  
incl. screws ( 4 x star knob screws),  
max. load 75 kg  
Order No. **08157/set**

**Doughty Quick Trigger Clamp**



max. load 250 kg  
Order No. **01223**

**Star Knob Screw**



M10 x 18 mm  
Order No. **08377**

**Ring Screw**



M10– DIN 580  
Order No. **73700**

**Knurled Head Screw**



Reduction screw for fastening  
M10 Flange (08126).  
Order No. **73755**

**Flange**



35 mm Ø → M10,  
Order No. **08126**

**TV Spigot**



10 mm internal thread,  
28 mm Ø  
Order No. **08128**



MultiRigg™

## ACCESSORIES K 20

### Speaker Stand



K&M, incl. wind up,  
height 138,5 to 218 cm,  
max. load 50 kg

Order No. **03011**

### Rain Cover



for K 20

Order No. **01253/RC**

### Cover



for K 20, padded

Order No. **01253**

### Flight Case



for 2 pcs. K 20 and accessories,  
heavy duty, 9 mm birch multiplex,  
PVC coated, 6 x recessed sprung  
handles, 4 x butterfly catches,  
4 x 100 mm blue wheels, 2 pcs. with  
brake, inserts for accessories, interior  
lined with felt.

Order No. **16031**



Rain Cover