

# Three-Way Line Array **Galeo XT**



A large fullrange line array system designed to satisfy the highest sound quality demands, the Galeo XT also boasts many innovative detail solutions to make the system easy to handle. The Galeo XT is fitted with 2 x 15" Nd woofers with bass reflex ports at the sides of the cabinet, 4 x 8" Nd mid-range drivers, and 2 x 1.4" Nd HF-drivers (3" diaphragm) behind the central waveguides. The 80° horizontal coverage is obtained by implementation of the patented "Air Mass Reflection" principle to ideally combine the midrange and high frequency sound waves. With the appropriate controller setting, this provides absolutely smooth and consistent horizontal coverage from 200 Hz upwards.

## PRODUCT SPECIFICATIONS (for one unit)

<b>Speaker Components</b>	2 x 15" Nd / 4 x 8" Nd / 2 x 1,4" Nd
<b>Description</b>	Three-Way Line Array Unit
<b>Power</b> AES / Peak	LF: 1000 W / 3000 W MF: 1000 W / 3000 W HF: 150 W / 500 W
<b>Impedance</b> nominal	LF: 8 Ω / MF: 8 Ω / HF: 8 Ω
<b>SPL</b> 1 W / Peak @ 1 m	LF: 100 dB / 131 dB MF: 105 dB / 135 dB HF: 112 dB / 137 dB
<b>Usable Range</b> - 6 dB	45 Hz - 18 kHz
<b>Tuning Frequency</b> excursion minimum	50 Hz
<b>X-Overpoint</b> acoustical	Depends on preset
<b>Coverage</b> horizontal / vertical	80° x 7°
<b>Max. Splay Angle</b>	7°
<b>Connectors</b>	2 x 8-pin Neutrik NL8M
<b>Handles</b>	4 x
<b>Rigging</b> flying points	2 x M10 Integrated flying hardware
<b>Weight</b>	69,0 kg
<b>Size</b> height x width x depth	45,0 x 110,0 x 59,5 cm
<b>Order No.</b>	<b>00380</b>



Integrated flying hardware with spring loaded mechanism.

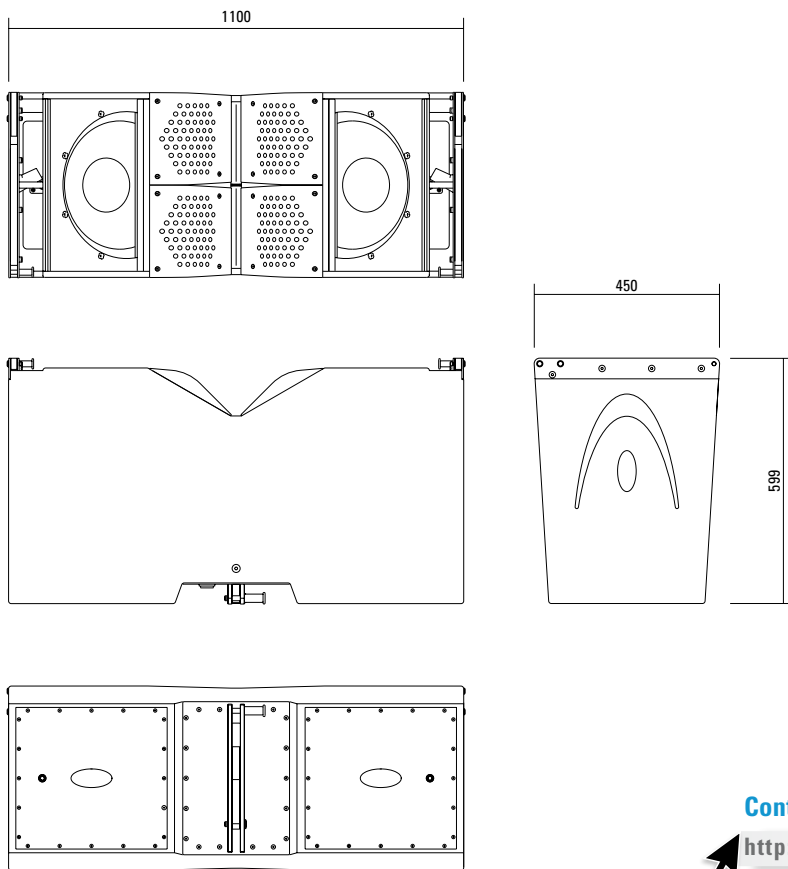


Galeo XT connection panel with integrated flying hardware.



The 80° AMR-Reflectors employ the patented „Air Mass Reflection“ principle.

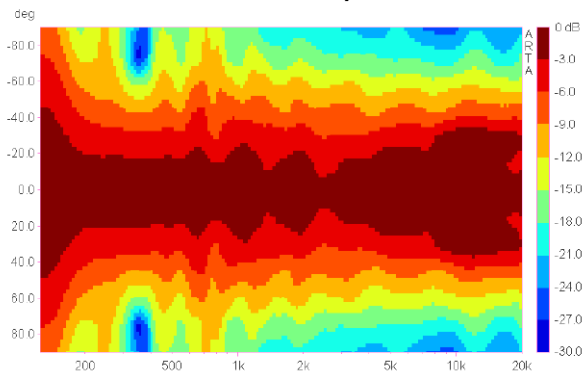
## DIMENSIONS



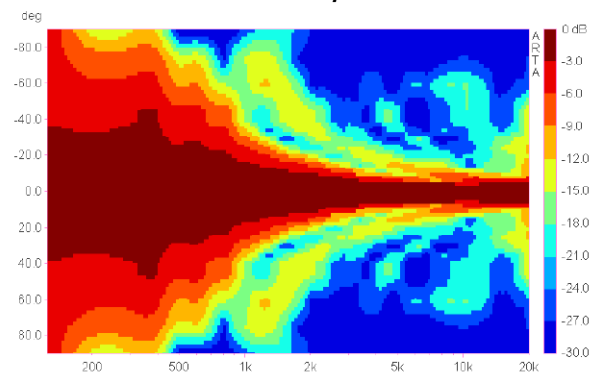
Controller Setups are available on our website:  
<http://www.seeburg.net/Controller-Setups>

## COVERAGE PATTERNS

Galeo XT horizontal - 2D Directivity Plot



Galeo XT vertikal - 2D Directivity Plott



**AMR® PRINCIPLE**

The AMR horn panels contain integrated channels which allow the sound waves generated by the low-mid speakers mounted behind the horn to pass through. For sound waves in the frequency range generated by the 1.4" HF driver, these channels behave as if they were sealed, due to the air mass inside the channels acting as a reflector (**AMR = Air Mass Reflection**).

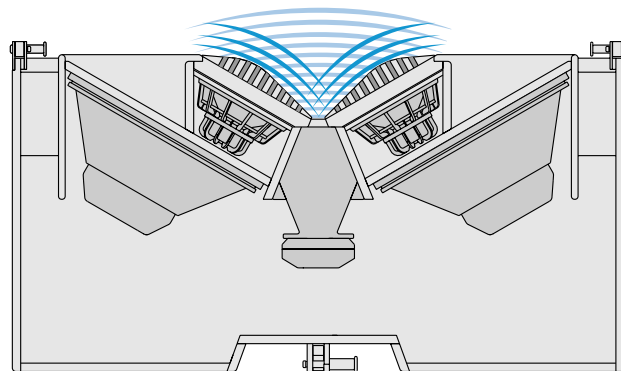
The low-mid speakers are coupled to an acoustical band pass filter with a center frequency close to the crossover frequency between the Mid and HF drivers. This construction provides smooth horizontal dispersion over a wide frequency range. Another asset is the extreme compactness of this design.

**Vertical Characteristic / Cylindrical wave front.**

The acoustic coupling between multiple Galeo units produces a cylindrical wave front. The bundling of the acoustical energy means that the system has a longer throw.

The vertical coverage angle is determined by the number of Galeo units, and their angle relative to one another. The longer the array, the longer the throw.

AMR® Principle



**AMR® REFLECTORS**

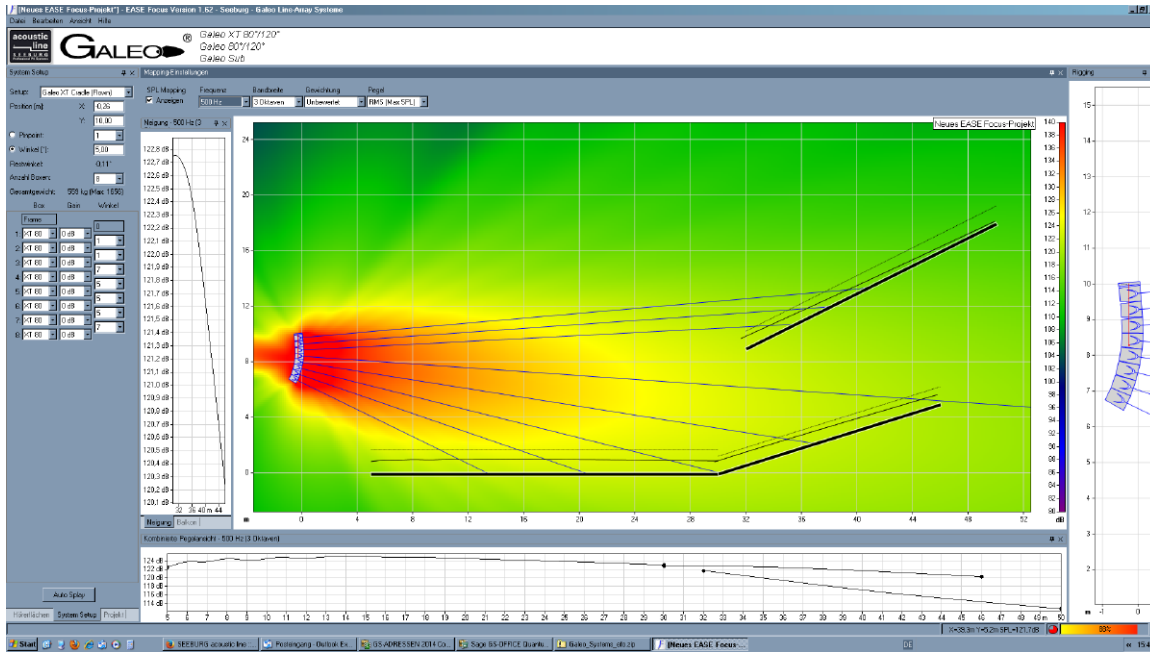


**By exchanging the AMR Reflectors, the horizontal dispersion can be changed from 80° to 120° and back according to demand.**

The more tightly bundled 80°- version of the Galeo XT system was developed especially for narrower audience areas. Thanks to the patented Air Mass Reflection principle, it is characterised by extremely precise and even directivity.

The simulation program.

The EASE-FOCUS software is available for use in the calculation of splay angles and expected coverage characteristics. The program has been especially adapted for the Galeo system. The completed simulation can be exported in printable form as a MS Word document to assist the technician in the installation of the system.



Printable version as MS Word document.

Projekt Details

<b>Projekt:</b>	Galeo XT
<b>Autor:</b>	unbekannter Bearbeiter
<b>Kommentar:</b>	ohne Kommentar
<b>Temperatur:</b>	20,0°C
<b>Luftdruck:</b>	Standard (1010 hPa)
<b>Luftfeuchtigkeit:</b>	Standard (60%)

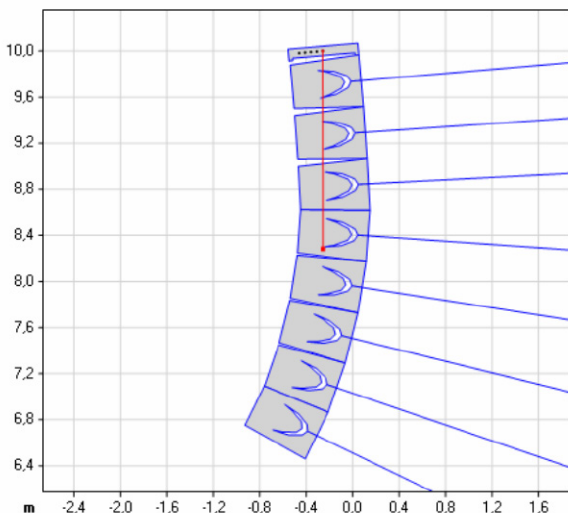
System Details

<b>Hersteller:</b>	Seeburg
<b>System Setup:</b>	Galeo Line-Array Systeme
<b>Pick Point:</b>	X= 0,26 m Y= 10,00 m
<b>Winkel:</b>	5,00°
<b>Pin Poin:</b>	1 (Restwinkel = 0,11°)
<b>Framegewicht:</b>	23,00 kg („Galeo XT Cradle“)
<b>Boxgewicht:</b>	536,00 kg („XT 80“)
<b>Gesamtgewicht:</b>	559,00 kg
<b>Höhe:</b>	3,61 m

Rigging Details

Nr.	Box	Gain	Winkel	Gesamtwinkel
Frame	<b>Galeo XT Cradle</b>			5,00
1	<b>XT 80</b>	0 dB	0	5,00°
2	<b>XT 80</b>	0 dB	1	4,00°
3	<b>XT 80</b>	0 dB	1	3,00°
4	<b>XT 80</b>	0 dB	7	-4,00°
5	<b>XT 80</b>	0 dB	5	-9,00°
6	<b>XT 80</b>	0 dB	5	-14,00°
7	<b>XT 80</b>	0 dB	5	-19,00°
8	<b>XT 80</b>	0 dB	7	-26,00°

Rigging

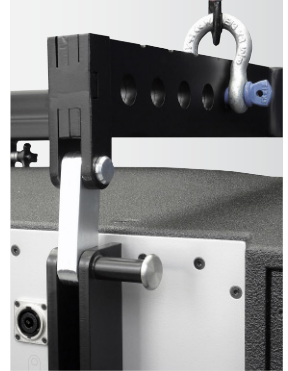




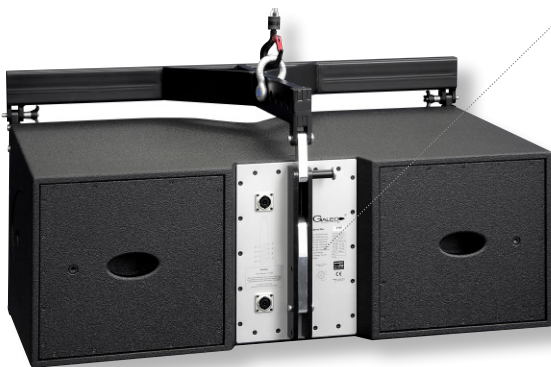
### Flying Cradle



Connection between the Flying Cradle and the Galeo XT Unit.



Integrated flying hardware with spring loaded mechanism for fast and easy set up.



### Flying Bracket



Galeo XT connection panel with integrated flying hardware.





## ACCESSORIES GALEO XT

### Flying Cradle

incl. Accessories

Order No. **01391**



### Flying Cradle

for transition GALEO XT -> GALEO

Order No. **01392**



### Ground Stack Board

for GALEO XT

Order No. **01271/ground stack**



### Ball Lock Pin

for GALEO XT for flying cradle,  
10.0 x 40,0 mm

Order No. **01380/40**

for transition for GALEO XT -> GALEO,  
12.0 x 35,0 mm

Order No. **01380/35**



### AMR Reflectors 120°

for Galeo / G3,  
consisting of 2 pcs.  
AMR reflectors 120°, incl. fittings

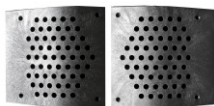
Order No. **08141/120**



### AMR Reflectors 80°

for Galeo / G3,  
consisting of 2 pcs.  
AMR reflectors 80°, incl. fittings

Order No. **08141/80**



### Speaker-Multicore

for Galeo XT, heavy duty NL8

0,5 m Order No. **08440**

10 m Order No. **08443**

15 m Order No. **08445**



### Cover

for 3 x GALEO XT

Order No. **01235**



### Cover

for 4 x GALEO XT

Order No. **01235/4**



### 19" Rack

6 units, prepared for 2 x LAB amps,  
HDLM 8, Connection Panel, incl.  
internal cabling and installation

Order No. **10510**



### Dolly

for Galeo XT,  
for up to 4 stacked units, stackable

Order No. **01271**

