



The GL Sub dp is a dedicated Subwoofer for the GL 16 System. With 140 cm height it enables the optimal positioning of a GL 16 for a sitting or standing audience. The 12" speaker is powered by a 1000 Watt amplifier with DSP. The GL Sub dp is especially suited for applications which require a unobtrusively looking GL 16 System with Subwoofer.

PRODUCT SPECIFICATIONS

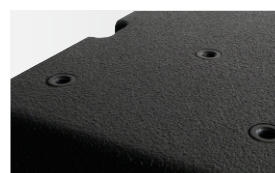
Speaker Components	12" Nd
Description	Digitally Powered Bass Extension
Amp Power	1000 W EIAJ / 195-250 V
Rated Current	2,0 A @ 230 V
SPL <small>Peak @ 1 m</small>	126 dB
Max. Input Signal	21 dBu
DSP	ARM Processing 32 bit fixed point
AD / DA	24 bit / 48 kHz
Latency	1,54 ms (analog in to analog out)
Usable Range <small>- 6 dB</small>	35 Hz - 220 Hz
Tuning Frequency <small>excursion minimum</small>	50 Hz
Connectors	Neutrik XLR in/out Neutrik PowerCon in/out
Handles	- - -
Rigging / Fittings	3 x M10 on top for GL 16 bracket 2 x M10 on side for GL 16 i 4 x M10 on bottom for various base plates
Weight	23,0 kg (without base plate)
Size <small>height x width x depth</small>	140,0 x 18,9 x 43,0 cm
Order No.	00530/dp



GL 16 flying bracket.

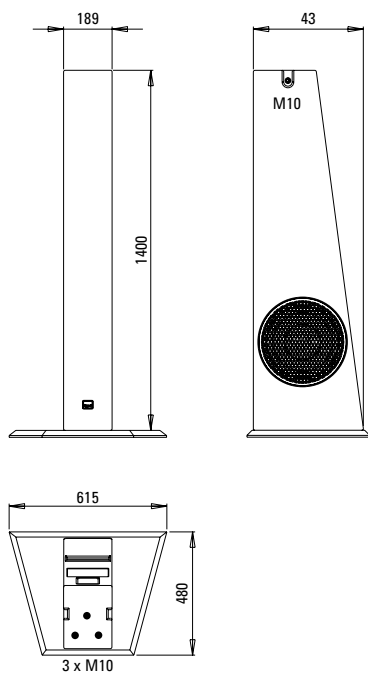


dp - connection panel.



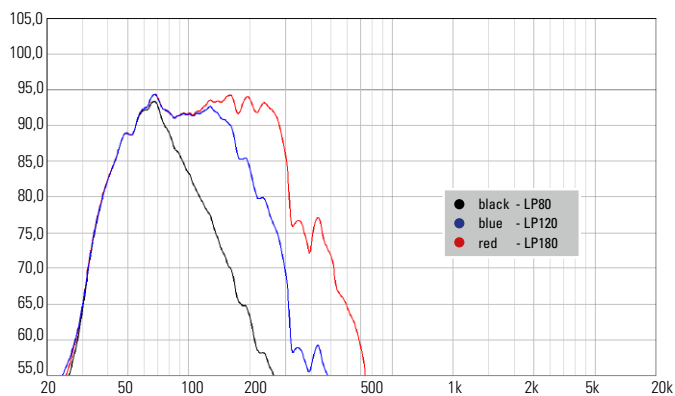
M10 threads for accessories.

DIMENSIONS



COVERAGE PATTERN

Presets - Frequency Response



APPLICATIONS



GL 16i / GL 16c / GL Sub
GL 16c systems can be mounted by the use of the connection adapter.



Connection adapter.



GL 16 flying bracket.



GL 16i / GL Sub
GL 16i systems can be mounted directly.



GL 16i / GL Sub
GL 16i: mounted with flying bracket.

The GL Sub dp features integrated digital amplifier electronics with a DSP controller. Various factory-configured presets and volume settings can be selected.

High-grade electronic components from the industrial sector and a first-class circuit design ensure excellent audio quality with low distortion and a minimal noise floor. Highly efficient and "intelligent" limiter systems ensure optimum protection against overload, without restricting the possibilities offered by this high-performance sound system.

XLR

Symmetrical analog input, max. Input +21 dBu
Effective filter protection against HF interference and DC Voltages.
Virtual ground lift.

Level

Adjustment in 3 dB steps (-6 dB to +3 dB).

Mute LED

Red light when the system is muted or under technically critical conditions.

Limit LED

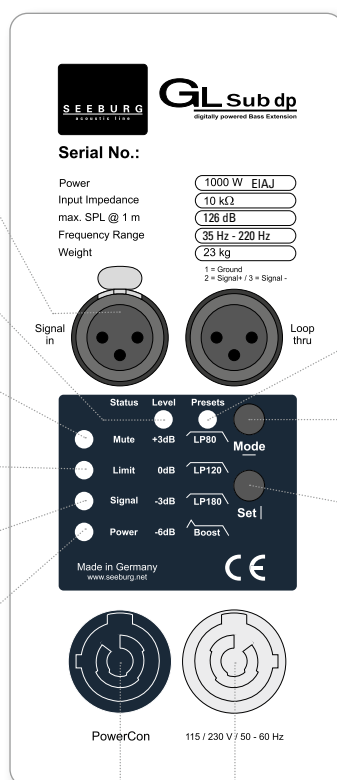
Yellow light when the limiter is restricting the level.

Signal LED

Green light when the input signal exceeds -20 dBu

Power LED

Green light when the system is switched on.



Presets

LP 80

Low Pass filter with 80 Hz cutoff frequency.

LP 120

Low Pass filter with 120 Hz cutoff frequency.

LP 180

Low Pass filter with 180 Hz cutoff frequency.

Boost

Bass boost at 50 Hz.

Mode - key

Switches between control modes Status, Level and Presets.

Set - key

Setting of various values and Mute on / off.

PowerCon (blue)

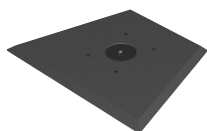
Power supply
~195-250 VAC.

PowerCon (grey)

~230 VAC / 16 A max.
loop through connector

ACCESSORIES GL Sub dp

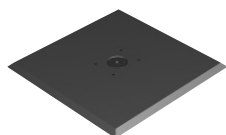
Small Base Plate



for GL 16 / GL Sub / L-Series
with M20 flange,
61,5 x 48,0 cm

Order No. **01278/M20**

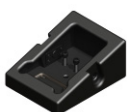
XL Base Plate



for stacked mounting
of multiple GL 16 units / GL Sub
with M20 flange,
80,0 x 80,0 cm

Order No. **01279/M20**

Connection Adapter



for GL 16c -> GL Sub, G Sub 1501

Order No. **01276**

Hybrid Cable System



PowerCon-PowerCon / XLR-XLR

2,5 m Order No. **08462**

5 m Order No. **08464**

10 m Order No. **08466**

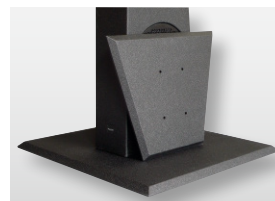
15 m Order No. **08468**

Universal Bag



Universal bag for
small base plate and accessories,
with side pocket
51 cm x 62 cm x 23 cm
(height x width x depth)

Order No. **01227**



XL base plate and small base plate.