



STAITDTREAT BXA[®]

TUNED ABSORPTION PANEL

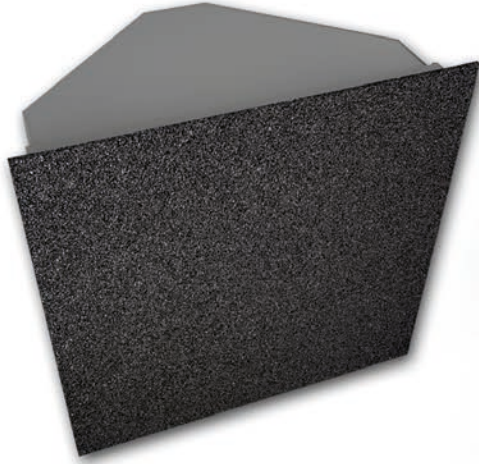
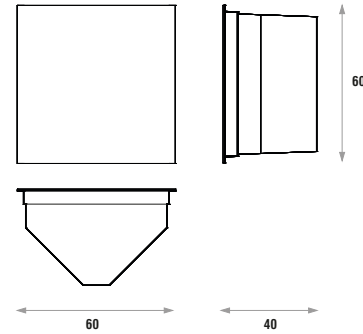


Image of 60x60cm model Ref.:BXA060 (on the left) and Ref.:BXA060 (ambient image).

DESCRIPTION

The STAITDTREAT BXA[®] is a low-frequency absorption panel. It is tuned to 63 Hz and is meant to be placed in 90° corners. The principle used to develop the STAITDTREAT BXA[®] is exclusive to JOCAVI[®]. It combines an ABS box, which has two appropriately enhanced closed resonance chambers inside, with mass and density components. These components have been specifically developed for this model. Therefore, because of its careful development, this panel has become one of the best offers in the market for low-frequency absorbent materials. In order to boost bass absorption, we recommend that this panel is used together with the STAITDTREAT BXW[®], as the latter functions close to the harmonics of this model.

TECHNICAL DRAWINGS



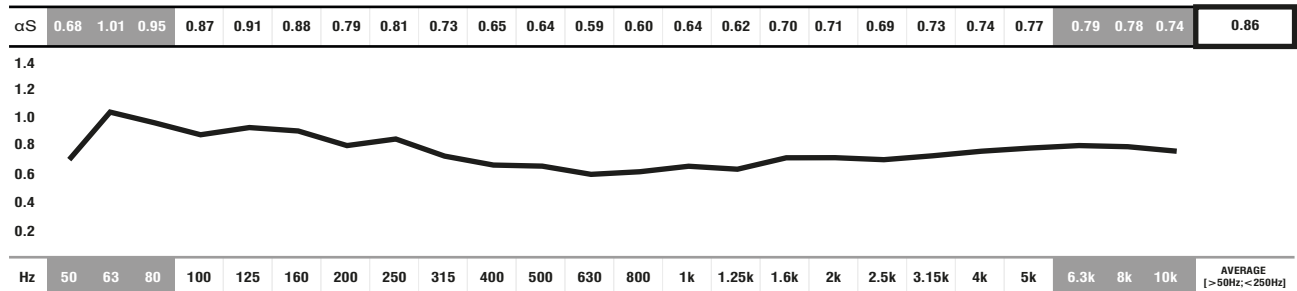
FEATURES

- Plate of pressed mineral granulate.
- Tuned to 63Hz.
- Average absorption: **0.86/m²** [>50Hz; <250Hz].
- Fire-resistance: Euroclass A2-s2,d0 (similar to old M1).
- Made of recyclable materials.
- Application on ceiling and wall corners
- Installation: Mounting Aluminium Bars NOT included.

MODELS AND SIZES

MODELS	HEIGHT	WIDTH	DEPTH	WEIGHT
BXA060	60 cm	60 cm	40 cm	5.9 Kg
BXA060/AT ◀	60 cm	60 cm	40 cm	11.1 Kg

ABSORPTION COEFFICIENT



■ ABSORPTION COEFFICIENT: Values in accordance with the standards: EN 20654, ASTM C423 and EN 11654.

■ Values [<100Hz and > 5K] are Non Standard Values.

STANDARD MINERAL GRANULATED COLOURS



IMPORTANT NOTICES

- JOCAVI[®] accepts no responsibility for any printing errors. Specifications can be modified without prior notice, if technical or commercial reasons so require.
- RAL[®] is an international independent colour standard system partner for industry, trade, architecture and design. Should be consulted before placing any order.
- The colours shown on this catalogue are only a reference and an illustration of the products finishing. The colours shown are not binding because brightness, contrast and colour balance may vary due to the printing process.
- Colours may vary due to raw-material suppliers' changes and some differences may occur in tonal range.
- Typical Indoor Comfort Standards state a temperature range of 20°C - 27°C (68°F - 81°F), and a relative humidity of less than 60%. These would be considered as normal operational levels of JOCAVI[®] products' range.
- Sizes may vary slightly due to their production method and some inherent raw-materials characteristics.