



Subwoofer extension for the A 1.

The 12" long-excursion chassis utilises a double band-pass cabinet, ensuring very deep and punchy bass response.

The cabinet features 8 x M8 mounting points for installation. Optionally available the dc-version for satellite system applications.

PRODUCT SPECIFICATIONS

	A 1 Sub	A 1 Sub dc
Speaker Components	12"	12"
Description	Passive Bass Extension	Passive Bass Extension
Power AES / Peak	300 W / 900 W	2 x 150 W / 2 x 450 W
Impedance nominal	8 Ω	2 x 4 Ω
SPL 1 W / Peak @ 1 m	94 dB / 121 dB	94 dB / 121 dB
Usable Range -6 dB	35 Hz - 150 Hz	35 Hz - 150 Hz
Tuning Frequency excursion minimum	38 Hz / 110 Hz	38 Hz / 110 Hz
Connectors	2 x Neutrik Speakon NL4MP in/out Coding: 1+/- loop thru, 2+/- Sub	2 x Neutrik Speakon NL4MP in 2 x Neutrik Speakon NL4MP out Coding: 1 +/- Sub, 2 +/- n.c.
Handles	---	---
Rigging / Fittings	8 x M8	8 x M8
Weight	18,5 kg	19,5 kg
Size height x width x depth	35,0 x 80,0 x 30,0 cm	35,0 x 80,0 x 30,0 cm
Order No.	00220	00220/dc

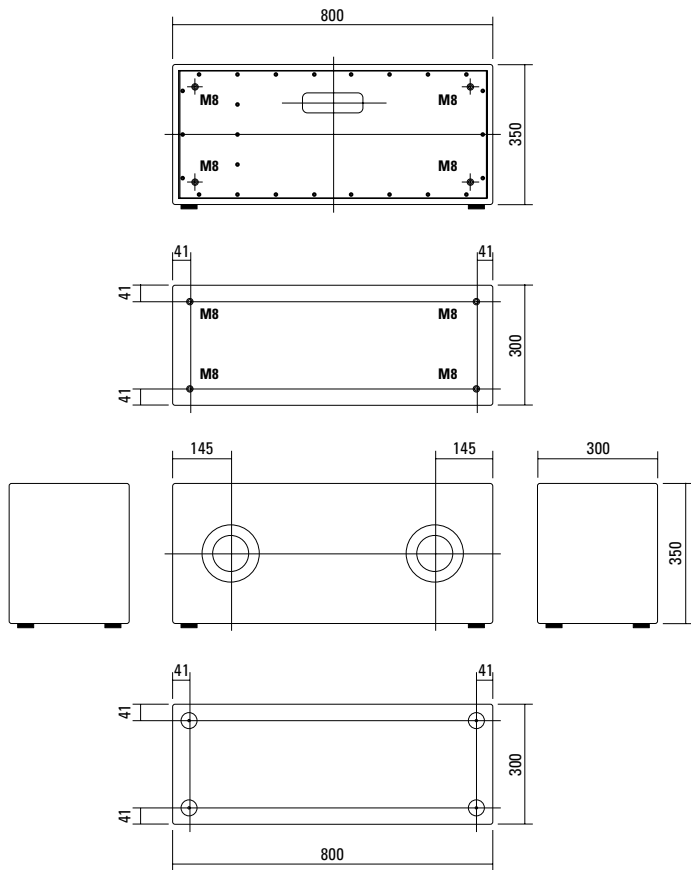


Generously proportioned bass reflex ports provide deep and crisp bass reproduction.



Connection panel of the dc-version. For use as the basis of a satellite system.

DIMENSIONS



Controller Setups are available on our website:

<http://www.seeburg.net/Controller-Setups>

ACCESSORIES A 1 Sub

Cover



for A 1 Sub / A 1 Sub dc

Order No. **01259**

MEASUREMENT

Impedance

